



GOING 'ROUND

Front Range Woodturners Newsletter

Vol. 21, No. 9 September 2021

Editor: Brenda Blaesing

SEPTEMBER DEMONSTRATOR – Bruce Perry Tuesday, September 14th

Joe Levy - jelevy.1977@gmail.com

Some trees are famous. Some trees have stories. Some trees have famous stories. General Sherman... Major Oak... Washington's Cherry Tree... Siddhartha Gautama's fig tree... Eve's "apple" tree... Newton's apple tree. While this tale starts with an everyday average apple tree, we now know, from this "comprehensive" list of famous trees, that apple trees are historically more significant than others.

In the early 90s, Bruce was attempting to sell some carved walking sticks while sitting on a blanket under our everyday average apple tree just outside the Mayfest Craft Fair. There happened to be a woman sitting on a nearby blanket selling her crochet work. Guy saw girl.... girl saw guy... Joe throws up a little in his mouth... and four years later, Bruce and Sandy were approaching their wedding day. It turned out, they were short a few tables for the wedding which prompted Bruce to buy materials and make three additional tables. Using a Jet 12-36 lathe and some basic tools he purchased for \$300 from a local pawn store, he started out turning a bunch of small candle lamps and 12 table legs. After the wedding, the candle lamps were given away or sold, two of the tables sold, and while Bruce's days of turning table legs were over, his woodturning days had just begun.

Sometime later, at a local art show, Bruce was amazed when he saw some very large turnings. He asked the turner what type of lathe he used to make these pieces and, in response, the maker said he used a Vicmarc 300. He then proceeded to show Bruce some pictures of 12' long turned columns.

WHERE TO FIND US:

Website: www.frontrangewoodturners.org

Facebook: <https://tinyurl.com/yacakdwa>

Ladies of the Lathe: <https://tinyurl.com/yap8m6x4>

YouTube: <https://tinyurl.com/yxem4vw9>

THIS MONTH'S NEWS:

September Demonstrator	1-3
Club Information & Officers	2
Ladies of the Lathe	3
Mentors.....	4
Upcoming Demos	5
Group Buys.....	5
Workshop Review	6
For Sale.....	6
Photo Gallery	7



CLUB INFORMATION

Front Range Woodturners is the Denver-area chapter of the AAW (American Association of Woodturners), serving woodturners throughout Colorado's Front Range. We help woodturners gain experience by providing monthly demonstrations with professional turners, mentoring, a ladies group (Ladies of the Lathe) and youth mentoring.

MONTHLY MEETINGS

Once we're back to live meetings again, everyone is welcome to check out one of our monthly meetings. Meetings are held on the first Tuesday of the month at Rockler Woodworking, 2553 S Colorado Blvd. #108 in Denver. Meetings start at 6:15pm.

MEMBERSHIP DUES

Individual - \$45, Couple - \$50, Student - \$22.50.

FRW members consist of the following:

Co-Club Members	10	Lifetime Members	13
Family Members	34	Roster	46
Individual Members	102	Student Members	1
Total Membership			206

CLUB OFFICERS & BOARD MEMBERS

President: Ed Sonny Jones

Vice President/Program Director: Don Prorak

Secretary: Patrick Crumpton

Treasurer: Larry Abrams

President Emeritus: Pat Scott

Club Historian: Joe Levy

Coffee Chair: Gary Starritt

Communications Chair: Jim Proud

Group Buy Coordinator: Jay Miller

Internet Chair: Open

Ladies of the Lathe Chair: Robyn Herman

Librarian: Bob Britt

Membership Chair: Mike Mullen

Mentoring Program Chair: Marty Christensen

Newsletter Editor: Brenda Blaesing

PHEOG Grant Chair: Bob Franklin

Photographer: Jim Record

Publicity Chair: Jay Miller

Shop Tour Chair: Al Murphy

Videographer: Richard Kuivila

Wood Raffle: Lavonne Kaiser

Youth Chair: Don Prorak

(Some of you may already know the identity of this mystery turner. For the rest, this was the first time Bruce met Keith Gotschall.) Thus far, Bruce's turnings were all fairly small. Having been introduced to a new realm of possibilities, Bruce began his pursuit of these new frontiers and, eventually, found himself in a class taught by Pete Holtus. Not long after this class, Bruce joined the Front Range Woodturners and upgraded to a Powermatic 3520 lathe.

Now having a lathe that could handle some large pieces, Bruce immediately attempted his first large bowl from a stump which exceeded the lathe's 20" swing capacity and had to be turned outboard. Bruce ignorantly and blissfully rough-turned this 37"x31"x10" monster of a stump as it whirred around making sounds like a prop plane. In Bruce's words, "If I had known what I was doing I would have been terrified!" Fortunately for Bruce, the bowl warped so severely while drying that he never did return to finish it. He keeps the blank as a reminder never to overestimate his skill or nerve.

Over the years, Bruce took classes from the likes of Cindy Drozda, Stuart Mortimer, David Ellsworth, Trent Bosch, Glenn Lucas and others; eventually, developing the skills to turn the winged form he'll demonstrate for us this month. Back in 2009, Bruce was demonstrating this same project to the Rocky Mountain Woodturners. Early in the demo, while the couple-pound blank was still out of balance, Bruce pressed the big red stop button on their Powermatic in order to answer a question. Afterward, he then attempted to resume by turning the speed control up which, obviously, did nothing. Having remembered that he stopped the lathe with the red button, he then pulled that red button. Not remembering that he had cranked up the speed to the neighborhood of 3000 rpms, within seconds that 700+ lb monster shook itself four feet towards the audience causing the first three rows of the audience to scramble. Bruce caught up to the lathe and turned it off before it pulled the cord from the wall, and with a healthy dose of adrenaline coursing through his veins, he grabbed the lathe with one hand and dragged it back into place. Once the audience had their chairs back in place, Bruce remarked about the success of his chosen method of holding the blank and resumed

the demo.

For many years now (the recent “COVID years” notwithstanding), Bruce has taught Rockler’s woodturning classes and helped many people explore the woodturning craft (myself included). Coming from the heart of an instructor, Bruce’s best advice is to try to duplicate all the projects that our demonstrators show us each month. Coming from the heart of a woodturner, his best advice is to turn what you enjoy and “tune yourself up [by] turning something to sacrifice to the lathe spirits” before making something that you really want to make right. These are certainly wise words for those looking to learn; but I think the real lesson in this story is that everyday average apple trees must be the “love potion #10”.

LADIES OF THE LATHE

Merryll Saylan



August was the first in-person get-together since Covid of the Ladies of the Lathe at Rockler. **Dave Hawley** offered to teach how to turn eggs. Dave told me he’s turned hundreds of eggs and used to give them away at craft shows. I offered to assist and since I’ve never turned an egg, this was my opportunity to learn. Everyone was required to be vaccinated and we had a small but enthusiastic group. Dave is a veritable fountain of information and owner of tools and willing to share.



Darla Landfair’s three unfinished eggs of cherry, crab apple and something spalted.



Donna Kitchens’ two unfinished eggs from class plus a goose egg.



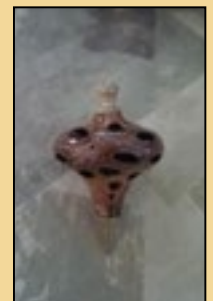
Debra Higley Feldman’s beautiful 6” buckeye bowl (wood from an FRW wood sale) plus a 2-3/4” silver maple egg.

September Meeting - Saturday, 9/11

Robyn Herman - rrherm@gmail.com

The September meeting won’t be on the usual third Saturday, but a week earlier. On Saturday, September 11th, Ron Ainge will demonstrate how to turn banksia pod ornaments. The cost for materials is \$7.00.

If you’d like to attend, please contact Robyn at the above email.



BEADS OF COURAGE

The mission of Beads of Courage is to provide Arts-in-Medicine Programs for children coping with serious illness, their families and the clinicians who care for them.

Rick Fleming and **Ed Cypher** collect bowls for the organization. Bring your bowls to the next meeting or contact Rick or Ed about taking a contribution to them.

Rick: turningadgnet@yahoo.com

Ed: cypher4691@msn.com

MENTORS

Marty Christensen -
mecturning@gmail.com



Quite a few FRW members have volunteered to be one-on-one mentors to help other members. No matter what skill level you are, a few hours of personalized instruction may be all you need to master a new tool or technique. Check out who is available in your area. If you'd like to volunteer as a mentor, contact Marty.

LOCATION OF MENTOR	NAME/ CONTACT INFO	AREA OF EXPERTISE
Arvada	Dennis Fanning dcfanning@aol.com	General
Boulder	Dave Hawley Dbh001@gmail.com	Beginner/ General
Brighton	Don Prorak donprorak@comcast.net	Beginner/ Youth
Centennial	Keith Motzner knotzner@me.com	Firewood into Art/ Wood Prep
Centennial	Les Stern sternsclass@hotmail.com	General
Centennial	Scott Thomsen thomsen-s@comcast.net	Hand-Threading/ Segmenting
Central Park	Ed Sonny Jones edsonnyjones333@gmail.com	General/ Segmenting
Denver SW	Henry Williams williamshenrya@gmail.com	Spindles/ Bowls
Denver SW	Phil Houck houckpc@comcast.net	General/ Spindles
Denver- Rockler store	Larry Abrams laabrams.51@me.com	General
Hudson	Marty Christensen mecturning@gmail.com	General
Littleton	Jay Miller jaymiller9637@comcast.net	General
Louisville	Roger Holmes roger_holmes@comcast.net	Beginner
Thornton	Bob Franklin Btheb66@gmail.com	General/ Stabilizing
Westminster	Mike Skiba mrpsmj@gmail.com	General

MENTORING PROGRAM - Monday, 9/13

The monthly mentoring program will resume in September, though not at Rockler. The meeting will be held on Monday, September 13th at Marty Christensen's house in Hudson from 5:00 to 7:00pm. The subject is turning a one-piece shop mallet.

AAW MEMBERSHIP

Front Range Woodturners is a chapter of the American Association of Woodturners. Club members may become individual members of AAW, if desired. Benefits include resources, weekly emails on various woodturning topics, and the quarterly American Woodturning magazine. See AAW's website at www.woodturner.org for more information.

ROCKLER

Patronizing the Rockler store is the best thank you we can give Rockler for their generosity in letting us use their facilities for our meetings. They keep the register open late on meeting nights just for us. but be sure to complete any purchases no later than the mid-meeting break. All FRW members get 10% off all items, except electrical or sale items, all the time. Just present your FRW membership card at time of purchase. Note: This offer is good only at the Denver store and is not valid at other Rockler stores or for online purchases.

NEWSLETTER SUBMISSIONS

Brenda Blaesing - b.frezean@yahoo.com

Articles and photos for the monthly newsletter are always welcome. Please email your submissions by the 26th of the month for inclusion in the next issue.

UPCOMING DEMO

Don Prorak - donprorak@comcast.net

FRW September Meeting & Demo

Tuesday, September 14th, 6:15 PM

Rockler Basement Meeting Room

It was great to see everyone again at our meeting in August, and to watch Roper's Christmas tree demo live & in-person! Of course our turning challenge for September is a tree of your choice. Our September meeting will be on Tuesday, September 14th at 6:15 PM, and the demonstrator is Bruce Perry. Bruce presented his Georgia O'Keefe inspired hollow vessel via Zoom at the start of the lockdown, but we were working with bare-bones technology at that point and had to do it mid-day, so not a lot of folks got to participate. While it is a more advanced level project, it is inspiring both technically and artistically, so we thought we should reprise it live. Thanks, Bruce!

In the interest of continuing live meetings, We are asking that EVERYONE wear a face covering to attend the meeting. We have a lot of members with risk factors; we are meeting in a relatively small space with poor ventilation, and COVID infection rates in our state are again on the rise. The new variants live by the motto, "What doesn't kill you, mutates to come back and try again!" We are all used to wearing dust protection in our shops, so let's please do this for the health and safety of all our members. If we can ALL take this simple precaution, perhaps we can continue to meet live as a community of woodturners.

YOUTH MENTORING

Don Prorak - donprorak@comcast.net

I'm happy to announce that we are resuming Youth Mentoring at Stargate School. Jeff Hill and I will be meeting with students on Thursdays after school beginning September 2nd. We are required to wear masks. Safety & basics of spindle turning will be introduced initially, and we'll see where it goes from there. I'm excited!

QUARTERLY GROUP BUYS



FRW places group buys once a quarter—in January, April, July and October—to obtain discounted pricing from the below manufacturers. Our next group buy will be in October. Jay Miller is the group buy coordinator and Ted Mellin is his assistant. See the FRW website for more info, price lists and order forms.

Industrial Abrasives - send orders to Jay Miller

Industrial Abrasives is our principal vendor for sanding supplies. Prices for hook & loop mandrels and discs remain the lowest in the marketplace and their backing is a heavier weight than the competition.

Starbond - send orders to Jay Miller

Starbond is our cyanoacrylate (CA) glue supplier. Our minimum order is \$100, but we receive an additional discount at \$200, making shipping and handling essentially free.

Wood Carvers Supply - send orders to Jay Miller

All types of woodworking tools are available from this company. We receive a discount on everything in their catalog.

Craft Supplies - send orders to Ted Mellin

Craft Supplies sells a very wide range of products. Our minimum group purchase is \$1000. Members may not place individual orders using the club's ID to get a discount.

Spence Industrial Supply - send orders to Ted Mellin

We will be purchasing band saw blades from Spence in April and October only, unless a member can meet the minimum order in another quarter. All blades are carbon steel flexback in 1/4" (4 tpi), 3/8" (3 tpi), or 1/2" (4 tpi) width, hook tooth, and .025" thick. Our minimum buy is 20 blades for each width in any length.

Send orders and checks to:

Jay Miller
9637 W. Vandeventor Dr
Littleton, CO 80128
303-945-4306

Ted Mellin
9043 W Coco Dr
Littleton, CO 80128

Individual Catalog Orders

Two additional companies, Klingspor and Hartville Tool, offer discounts to members who wish to place individual catalog orders. See the website for more information.

REVIEW OF TRENT BOSCH WORKSHOP

Brenda Blaesing - b.frezeman@yahoo.com

Having received a Pete Holtus Educational Opportunity Grant from Front Range Woodturners to attend a 3-day Trent Bosch workshop, I was super excited when the weekend finally arrived. There were six people in the class and I was the only one from Colorado. The others were from Kansas, New Mexico, Idaho, Louisiana and Hawaii! There were two women (very unusual according to Trent) and both of us were named Brenda!

Some of us were fairly new to turning and some had been at it for years. Each of us had our own divided-off workstation, with a Robust American Beauty lathe (!!) and a complete set of tools including Trent's own stabilizer and visualizer (more on these later). Trent had an assistant to help provide individualized instruction—the very talented Laurent Niclot!

After introductions, Trent started with a demo of making a bowl from start to finish. He prefers to turn green wood and primarily turns it all at once, not rough turning and returning to it later. He doesn't mind the warping/movement that sometimes occurs while the wood is drying. After his was finished, it was our turn. We all got 8-10" diameter pieces of American elm and got to work. Trent and Laurent came around to each of us, checking our progress and answering any questions we had.

At lunchtime, we got takeout from a Fort Collins restaurant and sat in the yard eating and chatting. Trent's wife and daughters joined us and it was a fun, relaxed atmosphere.

In the afternoon, he showed us a bit of carving with a reciprocating saw and die grinder. He also introduced torching to highlight the grain using a small butane torch. With plenty of equipment to go around, we all tried various techniques.

On the second day, we started on hollow forms which I was especially interested in. Up until then when making vases, I had only drilled through the



piece with a Forstner bit, leaving a lot of wood and weight. Trent introduced us to the stabilizer, an apparatus that replaces the tool rest and keeps the hollowing tool level and in the proper position. Then came the visualizer, a true game-changer. Through the use of a camera and monitor, there was absolutely no guesswork or wondering how thick the wall was. I could see where it was still too thick and where it was good. Having never hollowed before, I was able to create a consistent 1/4" wall throughout the piece. Needless to say, I was beyond delighted!



The third day focused on additional decoration including woodburning and sandblasting. Laurent showed us how to make and hollow a miniature form. We all made another piece or two. Then we discussed drying, finishing and coloring. By the end of the day, I had learned so much I felt my head might explode. My turning ability and confidence had increased exponentially in just three days.

I highly recommend Trent's workshop to anyone, from beginner to expert. He works with whatever level students are at and modifies his instruction based on their interests. He has a lot of top-notch equipment for experimentation. Plus he's a super nice guy!

FOR SALE: Jet 10" Left Tilt Table Saw

3HP 240V 1 ph motor

Xacta fence and 52 inch extension table.

4 inch dust port.

Saw is set up perfectly and cuts square and true.
\$1500 obo.

(Note: Outfeed table and pile of wood are not included).

Contact
Al Murphy
if interested:
ajmurphy1
@comcast.net



PHOTO GALLERY

Here are some projects that members have been working on this month.



Unfortunately, photos of the August Show and Tell items were not available at the time this newsletter was published. I hope to show them next month.