



# FRONT RANGE WOODTURNERS

July, 2007, Volume 7 - Number 07

## Inside this Issue

<b>Upcoming Events</b> .....	1
<b>News</b> .....	1
<i>Parking Courtesy</i> .....	1
<i>Reminder – July Meeting on the 10<sup>th</sup>!</i> .....	1
<i>Trent Bosch and Allen Jensen Demo</i> .....	1
<i>Turning Challenge Rules</i> .....	1
<i>Group Purchases</i> .....	2
<i>AAW Membership</i> .....	2
<i>Perpetual Turning Project</i> .....	2
<i>Applications for Demonstrators</i> .....	2
<i>RMW Invitation</i> .....	2
<i>Volunteers Needed</i> .....	2
<i>Woodcraft Turning Demos</i> .....	2
<i>Club Library</i> .....	2
<i>Featured Providers</i> .....	2
<i>Wood Events</i> .....	3
<i>Materials Suppliers</i> .....	3
<i>Miscellaneous</i> .....	4
<b>Show and Tell</b> .....	4
<b>Demonstrations</b> .....	6
<b>Rockler</b> .....	8
<b>Web Stuff</b> .....	8
<b>Classifieds</b> .....	8
<b>Club Information</b> .....	8
<i>General Meeting Information</i> .....	8

## Upcoming Events

**Important Note:** Even though a turning challenge is announced for a meeting, this does not mean that other items can't be brought for the show & tell. Feel free to bring in what you've created and don't feel you have to be a master turner to show off your work.

*June – Tuesday, June 5.*

Demonstrator: Malcolm Tibbetts will be demonstrating segmented work. He's a published author and a world-class turner renown for making highly detailed segmented designs. He will have classes available, see the

newsletter for more information. Turning challenge: A piece "inspired" by someone's work – be sure to bring a reference to the original (picture, etc.).

*July – **Date Changed.** Tuesday, July 10.* Meeting date is being moved from July 3 to July 10 due to the holiday weekend. Demonstrator will be Bruce Hoover, demonstrating sanding and efficiency techniques. Turning challenge: Segmented pieces.

*August – Tuesday, August 7.* TBD.

*September – Tuesday, September 4.* Allen Jensen and Trent Bosch will be demonstrating **Beginning Hollow Turning and Beyond** (see below for a description). ❖

## News

### *Parking Courtesy*

Rockler has requested that several parking spots be left open in front of the automotive parts store as a courtesy.

### *Reminder – July Meeting on the 10<sup>th</sup>!*

### *Trent Bosch and Allen Jensen Demo*

Here is Trent's description of the demonstration scheduled for September.

### **Beginning Hollow Turning and Beyond**

In this presentation Trent and Allen will go into detail on the processes techniques and equipment used in creating hollow turnings. While one turns a hollow form, the other will be discussing with the participants

all the intricacies of the process from wood selection to finishing. Due to the both of them in this presentation they are able to cover a lot of information so come prepared to learn and enjoy.

Participants will leave this session with a complete understanding of the process of hollow turning. This is not a "watch and see how good I am demo" It is a presentation packed with valuable information that participants will be able to take home and apply to their own turning projects.

## *Turning Challenge Rules*

Here are the rules for the Turning Challenge.

**Category –** Typically, each month's challenge is the topic from the previous month's demonstration, unless otherwise indicated in the newsletter.

**Competing –** Please fill out a Show and Tell form for your competition piece and be sure to mark whether you think you are a Beginner, Intermediate, or Advanced turner.

**Voting –** Please vote once for each experience class. For example, you can vote once for a Beginner, once for an Intermediate, and once for an Advanced piece. Votes are tallied after the break and the winners announced.

You don't have to compete in the Turning Challenge, but it can be fun. Remember that you can bring other types of turnings for the Show and Tell, too.

# FRONT RANGE WOODTURNERS

---

## *Group Purchases*

Dave Hawley and Roger Holmes are Group Buy Coordinators and have made arrangements with multiple vendors for discounts applicable to group purchases. Participation in these orders is reserved for full FRW members. Orders are either placed on distributed order forms, order forms available on the FRW website, or order forms created by members.

You must sign up with Roger or Dave for group purchase discounts. It is FRW's policy that we do not provide our member roster to vendors, so if you want to tap into these discounts, please be sure to sign up.

Vendors:

- Industrial Abrasives – Min. order \$50. Includes sanding disks/mandrels. 5% shipping, or wholesale prices with 10% shipping. No tax. Contact Dave Hawley.
- Handibond (CA Glue) – Min. order \$100. No tax, no shipping. Contact Dave Hawley.
- Woodcarvers Supply – Min. order \$170. 10% discount everything in catalog. \$7.50 shipping split between all members participating in order. No tax. Contact Dave Hawley.
- Craft Supplies – Min. order \$1,000. Discounts vary. Usually 13% for non-powered items. Machinery and special shipping items will differ. No tax. Contact Roger Holmes.
- Klingspor – Member can make Individual orders once signed up. Does not require bulk order. Contact Roger Holmes.

Following is the schedule for the bulk order for 2007:

- Jul – Craft Supplies
- Aug – None
- Sep - Industrial Abrasives, Handibond, Woodcarvers Supply
- Oct – Craft Supplies
- Nov & Dec - None

Contact Dave Hawley at 303-443-2332 or at [dave\\_hawley@comcast.net](mailto:dave_hawley@comcast.net).  
Contact Roger Holmes at 303-665-8041.

**Note:** If you can find the item at Rockler, please be sure to purchase it from them. We do owe it to them for providing our meeting area and additional events at their store.

## *AAW Membership*

The American Association of Woodturners (AAW) is our "mother" organization. FRW is a chapter of AAW. AAW has a separate membership fee and program from FRW with multiple benefits, not least of which is their quarterly *American Woodturning* magazine. Check out AAW's website at [www.woodturner.org](http://www.woodturner.org).

## *Perpetual Turning Project*

The concept is for the item brought for the Perpetual Turning Project is the first item in the next month's raffle. The member who wins the turning must bring another turning to the next month's meeting. It's an excellent chance for members to gain pieces made by other members. The turning can be as plain or fancy as you want. Beginners can participate just as much as advanced turners. If the member doesn't want to make a turning, he/she can choose just the wood, and the next winner can take the turning.

## *Applications for Demonstrators*

AAW is also asking for applications for demonstrators to the 2007 Woodturners Symposium. Contact them at [inquiries@woodturner.org](mailto:inquiries@woodturner.org) or at 651-484-9094.

## *RMW Invitation*

The Rocky Mountain Woodturners have an open invitation to their monthly meeting. They meet on the first Thursday after our meeting at Colorado State University, Fort Collins, at the Woodcraft Store, 3718 Draft Horse, Dr, Loveland, CO at 7:00 pm. Their website is [www.rmwt.org](http://www.rmwt.org). The Woodcraft phone is 970-292-5940.

## *Volunteers Needed*

We need volunteers who can show up at 5:00 pm at Rockler before each meeting to brew coffee and setup. Please contact Ron Bentall or just appear. We'll put you to work.

## *Woodcraft Turning Demos*

Pete Holtus does demos every Thursday, 6:30-8:30 pm at Woodcraft, 4403 Tamarac Parkway, Denver. Contact Pete at 303-364-5365 for more information.

Steve De Jong will be doing demos at Rockler. Contact Rockler for their schedules.

## *Club Library*

### *Suggested Items*

Contact Jim Applegate for suggestions about materials (books, videos, DVDs) to be added to our club library. The club does have a budget to purchase library materials and look to you to tell us what you want.

Of course, if you want to make donations to the library, all donations are gratefully accepted.

## *Featured Providers*

**Rocklers**, Colorado Blvd, Denver, provides a 10% discount for club

# FRONT RANGE WOODTURNERS

members – see the Rockler section on page 8. Rockler will be keeping the cash register open until the end of the meeting. Try to do your shopping before the end of the break, so that they can get out quickly after the end of the meeting.

*Guiry's Wallpaper and Art Supplies* - All six Guiry's locations are providing to members of Front Range Woodturners discounts on most everything in the store. Give the contractor account number of 7837 and name of "Front Range Woodturners" to the Guiry's cashier to get your discount.

*Wood Emporium*, Loveland, provides a 10% discount for FRW members.

Klingspor Catalog Orders: Members who signed up can get their 10% discounts by letting them know you're on the FRW member list. Second, if you order on-line, first send an email to [sales@woodworkingshop.com](mailto:sales@woodworkingshop.com) with your username (format is first name + last initial - i.e., John Smith would be "johns"), billing address, phone # and preferred password. You will receive a confirmation email within 2 business days. Members can be removed from this email list upon request. To be added or removed from the list, contact Roger Holmes at 303-665-8041.

Craft Supplies offers monthly deals with special discount codes that expire monthly. Discounts and codes will be announced at each FRW meeting.

## Wood Events

We receive notices of events, classes, or seminars that we think you may find interesting. (Note: FRW is not endorsing these events, but only providing the information for your convenience.)

## Utah Woodturning Symposium

One of the largest symposiums in the world. Provo, UT on June 21-23, 2007. Contact them at 801-422-2021 or at [www.utahwoodturning.com](http://www.utahwoodturning.com)

## AAW Symposium

Get more information at <http://www.woodturner.org/sym/sym2007>. Portland, OR on June 29-July 1, 2007. Contact them at [www.oregoncc.org](http://www.oregoncc.org) or at 651-484-9094. They are also accepting donated woodturnings for "Return to Community" to benefit the Doernbecher Children's Hospital in Portland.

## Rocky Mount School of Woodturning

Provides Basic, Intermediate, Advanced, and Specialty classes in woodturning. Full facilities. Contact Lee Carter at Rocky Mountain School of Woodturning, 4625 Kiva Drive, La Porte, CO 80535. Phone: 970-221-4382. Email: [LLJTC4X4149@CS.COM](mailto:LLJTC4X4149@CS.COM).

## Materials Suppliers

### Wood Suppliers

Following is a list of wood suppliers in the Colorado area. If you have more, contact Steve. (Note: FRW is not endorsing these suppliers, but only providing the list for your convenience.)

Rockler Woodworking and Hardware, 2553 S. Colorado Blvd., #108, Denver CO 80222, 303-782-0588, web [www.rockler.com](http://www.rockler.com).

Consolidated Hardwoods, Inc., 11850 Vance, Broomfield, CO 80020, phone 303-466-1839, fax 303-469-3580.

Swingle Tree Co., 8585 E. Warren Ave., Denver, CO 80231, phone 303-337-6200 or 303-369-2892.

Centennial Wood Co, Inc., 985 S. Logan St., Denver, CO 80209, phone 303-778-6209.

Austin Hardwoods of Denver, Inc., 975 W. Mississippi Ave., 80223, phone 303-733-1292 or 303-722-1007, web [www.austinhardwoods.com](http://www.austinhardwoods.com).

Colorado Tree and Shrubbery Specialists, Inc., 4760 Parfet St., Wheatridge, CO 80033, phone 303-431-4155, web [www.colorado-tree.com](http://www.colorado-tree.com).

Paxton Wood Source, 4837 Jackson St., Denver, CO 80213, phone 303-399-6047, web [www.paxtonwood.com](http://www.paxtonwood.com).

Custom Hardwoods, phone 303-280-6381, affiliated with Tech Western Warehouse, 4520 Indiana St., Golden CO 80403, contact Steve Bell phone 303-902-3115, 303-278-6882, or 303-452-9180.

Woodcraft Supply Corp., 4403 S. Tamarac Parkway, Denver, CO 80237, phone 303-290-0007.

Woodcraft Unlimited, Inc., 2301 S. Delaware St., Denver CO 80223, phone 303-778-9103.

Diverse Hardwoods, 617 1<sup>st</sup> Ave., Longmont, CO 80501, phone 303-651-1020.

TC Woods in Lafayette has local woods and walnut in stock. They also have a bandsaw mill to convert logs into lumber. Contact them at 303-666-8989.

Dennis Lacen has various woods from the Midwest. Contact him at 9477 Highway 85, Fort Lupton, CO, 303-594-7885.

Manzanita Burl from Mt. Lassen, CA. Crimson and gold grained. 20% discount to Woodclub members. Contact [jackburl96001@yahoo.com](mailto:jackburl96001@yahoo.com) for more information.

Fresh cut Norfolk Island Pine in log form in many sizes; Spalted Citrus, Bay Laurel, Red Cedar and Florida grown Mahogany. 10% discount to club members. Shipped as individual pieces via UPS or USPS, or in larger amounts via a commercial trucking company. Contact Joe Schneider at [jschneider1@cfl.rr.com](mailto:jschneider1@cfl.rr.com).

### Tool and Steel Suppliers

Vexor Custom Woodworking Tools, performs blade sharpening 7180 N. Washington St Denver, Co 80229 Tel (303) 286-8906. Rockler provides free drop off and pickup service for Vexor.

Victor Machinery Exchange, Inc. 251 Centre Street New York, NY 10013 Phone: 800-723-5359 <http://www.victornet.com>

MSC Industrial Supply 6100 Stapleton Drive, South

# FRONT RANGE WOODTURNERS

Unit A  
Denver, CO 80216  
Local (303) 935-2022  
or (800) 332-0210  
Fax: (303) 937-1228  
Email: [branchden@mscdirect.com](mailto:branchden@mscdirect.com)  
Web: [www.mscdirect.com](http://www.mscdirect.com)

DoAll Industrial Supply  
custom bandsaws  
2955 S. Tejon St.  
Englewood, CO 80110  
Phone: 800-92-DOALL  
Web: [www.doall.com](http://www.doall.com)

Lab Metal (metal putty for "enhancing" cracks)  
Alvin Products  
350 Merrimack St.  
Lawrence, MA 01843  
Phone: 978-975-4580  
Web: [www.alvinproducts.com](http://www.alvinproducts.com)

(Note: FRW is not endorsing these suppliers, but only providing the information for your convenience.)

## Misc. Suppliers

Sanding disks - Steve Worcester in Texas ([www.turningwood.com](http://www.turningwood.com) or 972-424-7958)

## Miscellaneous

### Courtesy During Meetings

We have been requested to please stay seated and quiet during the meeting and demonstration as a courtesy to our demonstrators and fellow members. If you feel the need for conversation during the meeting or demonstration, please feel free to step out into the Rockler store.

Also, we must make sure to return promptly after the break to make sure we don't lose time for our demonstrator.

### Contacting the Editor

Due to the hundreds of spam emails that Alisa receives every day, she has requested that if you want to contact her via email, be sure to include "FRW" in the subject line. This will help her not miss your email or accidentally delete it when she is clearing the garbage from her inbox. Her email address is [alisalimvere@yahoo.com](mailto:alisalimvere@yahoo.com).

## Problems Receiving Emailed Newsletter?

Unfortunately, many email providers are automatically filtering attachments or entire emails because of the proliferation of viruses and spam. If you have signed up for an emailed newsletter, but haven't been receiving it lately, try the following:

- Confirm that your email inbox isn't full. Many email providers will automatically deny emails without telling you if you've used up your space allotment.
- Check with your email provider to see if they are filtering your email without you knowing.
- If your email provider allows you, add the following email addresses to your "Always Allow" or "Do Not Filter" list: You may receive the newsletter from any of these addresses.

[alisalimvere@yahoo.com](mailto:alisalimvere@yahoo.com)  
[alisa@standingpeopledesigns.com](mailto:alisa@standingpeopledesigns.com)  
[matotanka@yahoo.com](mailto:matotanka@yahoo.com)

- Confirm with Alisa (newsletter editor) or Bear (membership chairman) that your email address is correct.

It's worth setting up to receive the newsletter by email. It saves paper, postage, and you get to see the photos in full color.

If all else fails, you can tell Alisa to send you the newsletter in hardcopy via USPS.

## Shop Tours

Please contact Jerry Smith if you would be interested in hosting a shop tour of your shop. You would not need any formal presentation or demonstration unless you would like to. Most members would just like to see how you organize your shop, store equipment and supplies, see any jigs you made or special tools you've made, see some of your turnings and just shoot the breeze in general. It's really kinda fun. You would be surprised to know how much new members appreciate just talking woodturning and getting to know each other. *Try it - you will enjoy it and so will those who come.*

## AAW Scam Warning

The following was received from AAW:

Recently one or more people have received telephone calls to join the AAW or to subscribe to the AW Journal (magazine). Here are the facts:

The AAW does not do any telemarketing or phone soliciting for membership or magazine subscriptions.

The AAW does not endorse any agents to solicit AAW membership or magazine subscriptions.

Any such telephone call you receive to this effect is a form of "phishing," where an unscrupulous person is trying to get your credit card or other personal information for their illegal usage. You should not give out your credit card number or personal information as a general policy unless you initiate the phone call to a known business. ❖

## Show and Tell

June turning challenge was a piece "inspired" by someone's work.



Bear Limvere – Funerary urn of maple, lignum vitae, cocobolo, and colored veneers with threaded lid. Destined for a friend whose father just passed away.

# FRONT RANGE WOODTURNERS



Jill Rice – Vases of lodgepole pine and elm.



Dave Moncada – Lidded box of ebonized cherry.



Steve DeJong – Shaving brush and stand of poplar and maple with multi-axis turning.



Gene Wentworth – Lidded form of aspen, walnut, pink ivory, ebony, and silver.



Ron and Betty Ainge – Two views of hollow form of maple with pyrography and dyed dragonflies.



Kim Komitor – Lidded boxes of padauk, maple, walnut, alder, and cherry.



Dave Moncada – Lidded boxes of cherry. Winner of Turning Challenge – Beginner.



Marty Christensen – Pens of laminates and acrylic.



Steve Claycomb – Hollow form of peach.



Jim Gennack – Lidded boxes of elm and burl.

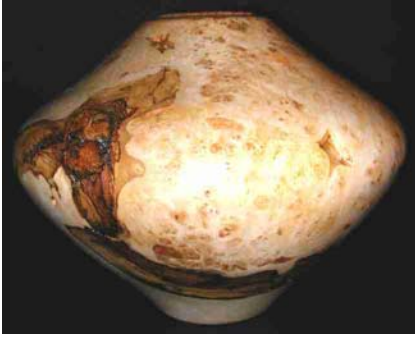


John Pennington – Bowl, cups, and bottle of aspen, apple, apricot, and maple.

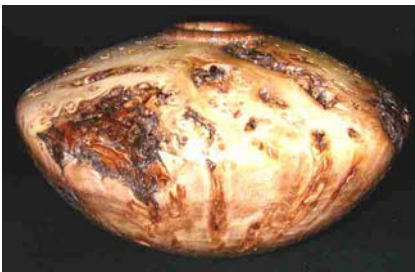


Joyce McHugh – Pens of acrylic and burl.

# FRONT RANGE WOODTURNERS



Grover Brown – Box elder and mesquite. Inspired by Southwest pottery forms.



Grover Brown – Hollow form of elm and walnut. Inspired by Southwest pottery forms. Winner of Turning Challenge – Intermediate.



Grover Brown – Birdhouse ornament and stand of post oak.



Richard Kuvila – “Board” bowl made of stacked rings of sycamore.



Peter Bissell – “Cascade” ornament of maple and walnut.



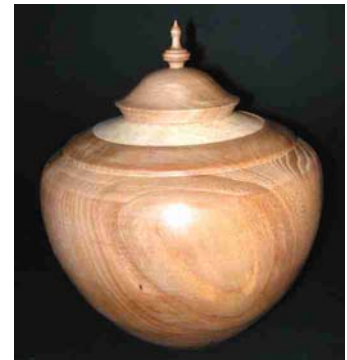
Bruce Perry – Lidded hollow form of aspen and walnut.



Bruce Perry – Lidded hollow form of aspen and walnut.



Peter Bissell – Spiral fireplace ornament of birch.



Bruce Perry – Lidded hollow form of elm and maple burl. Winner of Turning Challenge – Expert. ❖

## Demonstrations

Malcolm Tibbets demonstrated some of the techniques he uses to create his \*gorgeous\* segmented pieces. He began with a slide show of some of work as inspiration.



Malcolm Tibbets. The three most important things of any segmented piece: Form, Consistent Wood Grain Alignment, Good Joints.

# FRONT RANGE WOODTURNERS



Jig used to glue segments. It's a board with concentric circles and predrilled holes to hold nails. He covers the board with plastic, puts the nails in the holes, and stretches a good rubber band around the nails. This frees up his hands and helps keep the rubber band from snapping pieces all over. He then pours a small pool of original Titebond in the middle.



To glue the segments, he dips both sides of each segment in the glue pool and places in around the inside of the rubber band. Lots of glue helps prevent a starved joint. And careful alignment of grain helps prevent joint failure later, because the wood all moves in the same direction.



He glues the segments into half rings, leaving a nail spacer between the halves to keep the rubber band tension.



Once all the segments are place, he pulls the nails holding the band (but leaves the spacers between the ring halves) and lets the rubber band tighten the segments.



Samples of Malcolm's work. Note that the colors are reversed.



Sample of stacked, segmented rings.

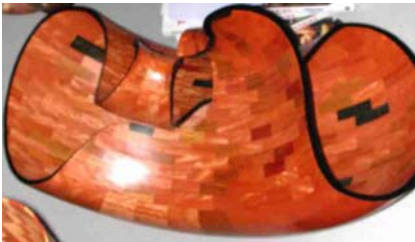


Cutaway view showing inside.



Two views of one of his signature pieces. This has thousands of segments of varying angles to build this form.

# FRONT RANGE WOODTURNERS



Side and top views of another spectacular piece. ❖

## Rockler

Patronizing their store is the best "thank you" we can give Rockler for their generosity in letting us use their facilities for our ever-growing membership. Keep in mind that they keep the register open late on meeting nights just for us. Just be sure to complete any purchases no later than the mid-meeting break so these poor guys can start shutting down and go home.

As always – all FRW members get 10% off all items, except electrical or sale items, all the time. Just present your FRW membership card at time of purchase. (Note: This offer is only good at the Denver retail location, and is not valid for any other location or for Internet purchases.)

If you have suggestions for tools or materials that Rockler can carry, contact Rich Johnson, manager of the Denver store. Rockler web site: [www.rockler.com](http://www.rockler.com).

## Web Stuff

The Front Range WoodTurners  
Web site address:

[www.frontrangewoodturners.com](http://www.frontrangewoodturners.com)

Get the latest information about upcoming events, meetings, and view the excellent photos of the show and tell gallery.

Other sites of interest:

(Rky Mtn Woodturners, Ft Collins)  
[www.verinet.com/~drmeli/rmw.html](http://www.verinet.com/~drmeli/rmw.html)  
[www.lathes.co.uk](http://www.lathes.co.uk)  
[www.woodworkingbasics.com](http://www.woodworkingbasics.com)  
[www.treelineusa.com](http://www.treelineusa.com)  
[www.woodturnerscatalog.com](http://www.woodturnerscatalog.com)  
[www.kestrelcreek.com](http://www.kestrelcreek.com)  
[www.choicewoods.com](http://www.choicewoods.com)  
[www.woodturner.com](http://www.woodturner.com)  
[www.woodturningonline.com](http://www.woodturningonline.com)  
[www.kazistudio.com](http://www.kazistudio.com) ❖

## Classifieds

*Please note:* All advertising in the Classifieds is free, but please be sure to notify the newsletter editor if an item is no longer for sale.

**Ad Policy** – All ads that are older than 3 months will be deleted, unless you contact the newsletter editor.

**For Sale** – Jet JWL 1236 Lathe with Casters, \$300. Single-stage air compressor, 2HP, 20 gal. tank on wheels, \$200. Delta 22-540 12" portable planer, \$100. Contact Mike Davis at 970-484-9190.

**For Sale** – Floor drill press. Contact Jim Genack at 720-949-0753.

**Wanted** – Heavy duty, variable speed lathe and tools. Powermate 25-30 or comparable. Contact Richard Lohner at 303-841-1198. ❖

## Club Information

**President:** Tom Wirsing  
phone: 303-7179427  
e-mail:  
[tom.wirsing@mesanetworks.net](mailto:tom.wirsing@mesanetworks.net)

**Vice President/Program Director/Videographer:** Andy Zartman  
phone: 303-859-0724  
email: [AWZartman@gmail.com](mailto:AWZartman@gmail.com)

**Treasurer:** Ron Ainge  
phone: 720-747-4852  
email: [clu1.2@netzero.net](mailto:clu1.2@netzero.net)

**Secretary & Newsletter Editor:**  
Alisa Limvere  
phone: 303-648-3414  
e-mail: [alisalimvere@yahoo.com](mailto:alisalimvere@yahoo.com)

Deadline for submitting material for inclusion in the newsletter is 15 days before the next meeting.

**Membership & Publicity Chairman:**

Bear Limvere  
phone: 303-648-3414  
e-mail: [Bear@BearLimvere.com](mailto: Bear@BearLimvere.com)

**Librarian:**

**Raffle-Wood Director:** Lavonne Kaiser  
phone: 303-791-6206

**Group Buy Coordinators:** Dave Hawley  
phone: 303-443-2332

email: [dave\\_hawley@comcast.net](mailto:dave_hawley@comcast.net)

Roger Holmes

phone: 303-665-8041,

[rogerholmes@earthlink.net](mailto:rogerholmes@earthlink.net)

Shop Tour & Mentor Program

Chairman: Open

**Internet Chairman:** Marti Norberg

phone: 303-973-2531

email: [billandmartinorberg@msn.com](mailto:billandmartinorberg@msn.com).

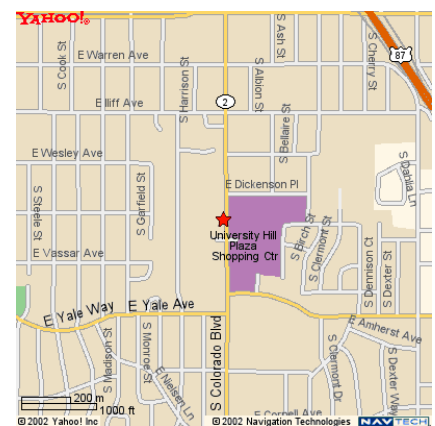
**Social Chairperson:** Rose Phillips  
home phone: 303-740-9663 and enter 6014 during the message work, 303-715-0172

## General Meeting Information

Normal meetings are the first Tuesday of every month, unless otherwise rescheduled.

Meeting place is at Rockler Woodworking & Hardware, 2553 So. Colorado Blvd. #108 Denver, CO (west side of Colorado Blvd. opposite the mall).

Meetings are 6:30 PM – 9:00 PM.





# FRONT RANGE WOODTURNERS

July, 2007, Volume 7 - Number 07

---

Front Range WoodTurners  
P.O. Box 714  
Franktown, CO 80116