



FRONT RANGE WOODTURNERS

April, 2006, Volume 6 - Number 04

Inside this Issue

Upcoming Events	1
News	1
Roster.....	1
New Lathe.....	1
Shop Tour Announcements...	1
Mentoring Classes.....	1
AAW Membership.....	1
Meeting Format.....	1
RMW Invitation.....	2
Volunteers Needed.....	2
Woodcraft Turning Demos.....	2
Bulk Orders.....	2
Club Library.....	2
Featured Providers.....	2
Wood Events.....	2
Materials Suppliers.....	2
Miscellaneous.....	3
Show and Tell	4
Demonstrations	6
Rockler	7
Web Stuff	8
Classifieds	8
Club Information	8
General Meeting Information .	8

Upcoming Events

Important Note: Even though a turning challenge is announced for a meeting, this does not mean that other items can't be brought for the show & tell. Feel free to bring in what you've created and don't feel you have to be a master turner to show off your work.

April – Tuesday, April 4. Brandon Mackie will be demonstrating "Log to Bowl." Turning challenge: Platters.

June – Tuesday, June 6. Doug Schneider will be demonstrating "Turning More Air than Wood."

July – Date TBD (not July 4). Chris Stott will be doing a full-day demo, topic to be announced.

August – Tuesday, August 1. Stuart Batty will be doing a full-day demo, topic to be announced. ❖

News

Roster

The 2006 membership roster is attached. This roster is provided to FRW members *only* and is intended to assist you in contacting co-members.

Please be aware that the information in this roster is confidential and proprietary, and is *not* to be used for any other purpose, including and especially marketing or mass email purposes. The only exception to the above rule is that the roster is provided to the Woodworker's Show so that they can notify members of the upcoming event in November.

Any members joining after the end of March can receive a copy of the roster upon request, but will not be included in the 2006 roster.

New Lathe

We have a new member of the family; a Powermatic demonstration lathe. It was voted and approved at the March meeting by the FRW members to purchase the Powermatic lathe at a very good discount from Rockler.

Thanks again, Rockler, for your generous support to our club!

Shop Tour Announcements

April

Les Stern will host a shop tour at his home on Saturday, April 22, from 1:00-3:00 pm at his home at 3722 S. Grape, Denver. More info will be provided next month.

Mentoring Classes

Mentoring classes are usually scheduled for the second and fourth Monday of each month at Rockler. Contact Phil Houck at 303-985-4692 for specific information. Mentoring classes are a benefit for members to get hands-on practice at the lathe.

AAW Membership

FRW is a chapter of the American Association of Woodturners (AAW). AAW is the national organization dedicated to furthering woodturning. All FRW members are encouraged to also become AAW members as well. You will get discounts for AAW events (see Wood Events on page 2), a quarterly magazine, and lots of other benefits. Support our parent organization by signing up to be an AAW member. See their website at www.woodturner.org.

Meeting Format

Tom Wirsing is welcoming suggestions from members on how

FRONT RANGE WOODTURNERS

to improve the meeting formats. We do a lot in a single night – raffle, show and tell, news, and demo – and Tom wants to make sure that we fulfill the needs of the club. Please contact Tom at the March meeting with your suggestions or email him at fronrangewoodturners@mesanetwork.com.

RMW Invitation

The Rocky Mountain Woodturners have an open invitation to their monthly meeting. They meet on the first Thursday after our meeting at Colorado State University, Fort Collins, in the Industrial Sciences building, Room 105, at 7:00 pm. Their website is www.rmwt.org.

Volunteers Needed

We need volunteers who can show up at 5:00 pm at Rockler before each meeting to brew coffee and setup. Please contact Ron Bentall or just appear. We'll put you to work.

Woodcraft Turning

Demos

Pete Holtus does demos every Thursday, 6:30-8:30 pm at Woodcraft, 4403 Tamarac Parkway, Denver. Contact Pete at 303-364-5365 for more information.

Bulk Orders

Dave Hawley will be taking orders for Craft Supplies and Cutting Edge Tools at the March meeting.

As always, check with Dave Hawley at each meeting if you have placed an order with him or if you want to get in on one of the bulk orders that he organizes. You can also call him at 303-443-2332 if you have questions or orders.

All bulk orders depend on making minimum amounts to get the discounts. Again and as always, thanks, Dave, for working so hard to save us all some money.

Club Library

Suggested Items

Contact Jim Applegate for suggestions about materials (books, videos, DVDs) to be added to our club library. The club does have a budget to purchase library materials and look to you to tell us what you want.

Of course, if you want to make donations to the library, all donations are gratefully accepted.

Featured Providers

Rocklers, Colorado Blvd, Denver, provides a 10% discount for club members – see the Rockler section on page 7. Rockler will be keeping the cash register open until the end of the meeting. Try to do your shopping before the end of the break, so that they can get out quickly after the end of the meeting.

Guiry's Wallpaper and Art Supplies - All six Guiry's locations are providing to members of Front Range Woodturners discounts on most everything in the store. Give the contractor account number of 7837 and name of "Front Range Woodturners" to the Guiry's cashier to get your discount.

Wood Emporium, Loveland, provides a 10% discount for FRW members.

Klingspor Catalog Orders: Members who signed up can get their 10% discounts by letting them know you're on the FRW member list. Second, if you order on-line, first send an email to sales@woodworkingshop.com with your username (format is first name + last initial - i.e., John Smith would be "johns"), billing address, phone # and preferred password. You will receive a confirmation email within 2 business days. Members can be removed from

this email list upon request. You can contact Dave Hawley at davedorothy@comcast.net or at 1516 Lodge Court, Boulder, 80303.

Craft Supplies offers monthly deals with special discount codes that expire monthly. Discounts and codes will be announced at each FRW meeting.

Wood Events

We receive notices of events, classes, or seminars that we think you may find interesting. (Note: FRW is not endorsing these events, but only providing the information for your convenience.)

Rocky Mount School of Woodturning

Provides Basic, Intermediate, Advanced, and Specialty classes in woodturning. Full facilities. Contact Lee Carter at Rocky Mountain School of Woodturning, 4625 Kiva Drive, La Porte, CO 80535. Phone: 970-221-4382. Email: LLJTC4X4149@CS.COM.

AAW 2006 Symposium

The American Association of Woodturners Symposium is scheduled for June 22-24, 2006, in Louisville, KY. AAW members pay \$245, non-members pay \$275 if you register before May 15, Raffle will include multiple lathes, tools, faceplates, and other wonderful items. See their website at <http://www.woodturner.org/sym/sym2006/> or call them at 651-484-9094 for more details.

Materials Suppliers

Wood Suppliers

Following is a list of wood suppliers in the Colorado area. If you have more, contact Steve. (Note: FRW is not endorsing these suppliers, but only providing the list for your convenience.)

FRONT RANGE WOODTURNERS

Rockler Woodworking and Hardware,
2553 S. Colorado Blvd., #108, Denver
CO 80222, 303-782-0588, web
www.rockler.com.

Consolidated Hardwoods, Inc., 11850
Vance, Broomfield, CO 80020, phone
303-466-1839, fax 303-469-3580.

Swingle Tree Co., 8585 E. Warren
Ave., Denver, CO 80231, phone 303-
337-6200 or 303-369-2892.

Centennial Wood Co, Inc., 985 S.
Logan St., Denver, CO 80209, phone
303-778-6209.

Austin Hardwoods of Denver, Inc., 975
W. Mississippi Ave., 80223, phone
303-733-1292 or 303-722-1007, web
www.austinhardwoods.com.

Colorado Tree and Shrubbery
Specialists, Inc., 4760 Parfet St.,
Wheatridge, CO 80033, phone 303-
431-4155.

Paxton Wood Source, 4837 Jackson
St., Denver, CO 80213, phone 303-
399-6047, web www.paxtonwood.com.

Custom Hardwoods, phone 303-280-
6381, affiliated with Tech Western
Warehouse, 4520 Indiana St., Golden
CO 80403, contact Steve Bell phone
303-902-3115, 303-278-6882, or 303-
452-9180.

Woodcraft Supply Corp., 4403 S.
Tamarac Parkway, Denver, CO 80237,
phone 303-290-0007.

Woodcraft Unlimited, Inc., 2301 S.
Delaware St., Denver CO 80223,
phone 303-778-9103.

Diverse Hardwoods, 617 1st Ave.,
Longmont, CO 80501, phone 303-651-
1020.

TC Woods in Lafayette has local
woods and walnut in stock. They also
have a bandsaw mill to convert logs
into lumber. Contact them at 303-666-
8989.

Dennis Lacen has various woods from
the Midwest. Contact him at 9477
Highway 85, Fort Lupton, CO, 303-
594-7885.

Manzanita Burl from Mt. Lassen, CA.
Crimson and gold grained. 20%
discount to Woodclub members.
Contact jackburl96001@yahoo.com for
more information.

Fresh cut Norfolk Island Pine in log
form in many sizes; Spalted Citrus,
Bay Laurel, Red Cedar and Florida
grown Mahogany. 10% discount to
club members. Shipped as individual
pieces via UPS or USPS, or in larger
amounts via a commercial trucking
company. Contact Joe Schneider at
jschneider1@cfl.rr.com.

Tool and Steel Suppliers

Victor Machinery Exchange, Inc.
251 Centre Street
New York, NY 10013
Phone: 800-723-5359
<http://www.victornet.com>

MSC Industrial Supply
6100 Stapleton Drive, South
Unit A
Denver, CO 80216
Local (303) 935-2022
or (800) 332-0210
Fax: (303) 937-1228
Email: branchden@mscdirect.com
Web: www.mscdirect.com

DoAll Industrial Supply
custom bandsaws
2955 S. Tejon St.
Englewood, CO 80110
Phone: 800-92-DOALL
Web: www.doall.com

Lab Metal (metal putty for "enhancing"
cracks)
Alvin Products
350 Merrimack St.
Lawrence, MA 01843
Phone: 978-975-4580
Web: www.alvinproducts.com

(Note: FRW is not endorsing these
suppliers, but only providing the
information for your convenience.)

Misc. Suppliers

Brandon Mackie has a source of filters
for those of you who want to create or
maintain filtration in your shop. Contact
him at the next meeting or at
latherunner@hotmail.com.

Sanding disks - Steve Worcester in
Texas (www.turningwood.com or 972-
424-7958)

Miscellaneous

Courtesy During Meetings

We have been requested to please
stay seated and quiet during the
meeting and demonstration as a
courtesy to our demonstrators and
fellow members. You feel the need
for conversation during the
meeting or demonstration, please
feel free to step out into the
Rockler store.

Also, we must make sure to return
promptly after the break to make
sure we don't lose time for our
demonstrator.

Contacting the Editor

Due to the hundreds of spam
emails that Alisa receives every
day, she has requested that if you
want to contact her via email, be
sure to include "FRW" in the
subject line. This will help her not
miss your email or accidentally
delete it when she is clearing the
garbage from her inbox. Her email
address is
alisalimvere@yahoo.com.

Problems Receiving Emailed Newsletter?

Unfortunately, many email
providers are automatically filtering
attachments or entire emails
because of the proliferation of
viruses and spam. If you have
signed up for an emailed
newsletter, but haven't been
receiving it lately, try the following:

- Confirm that your email inbox
isn't full. Many email providers
will automatically deny emails
without telling you if you've
used up your space allotment.
- Check with your email provider
to see if they are filtering your
email without you knowing.
- If your email provider allows
you, add the following email

FRONT RANGE WOODTURNERS

addresses to your "Always Allow" or "Do Not Filter" list:

alisalimvere@yahoo.com
alimvere@mxlogic.com
matotanka@yahoo.com

You may receive the newsletter from any of these addresses.

- Confirm with Alisa (newsletter editor) that your email address is correct.

It's worth setting up to receive the newsletter by email. It saves paper, postage, and you get to see the photos in full color.

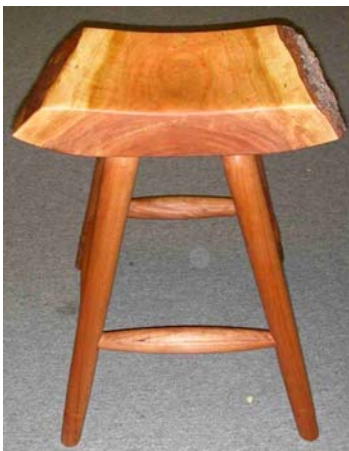
If all else fails, you can tell Alisa to send you the newsletter in hardcopy via USPS.

Shop Tours

Phil Houck has the sign-up sheet for those interested in giving a tour or going on a tour. Just remember – no one expects a sparkling clean shop, so don't worry about putting it off because you don't have time to tidy up. ❖

Show and Tell

The turning challenge for March was a rustic stool. Megan Caine won with her beautiful entry.



Megan Caine – Turned stool.
Winner of the March challenge!



Steve Claycomb – Triple candlestick in cedar.



Bruce Perry – Finial-lidded box in burl.



Bruce Perry - Tulip vase in aspen.



Rick Fleming – Small hollow form in elm.



Bruce Perry – Finial-lidded box titled "Muted Music". Donated to the Channel 6 Auction.



Bear Limvere – Hollow form in aspen.

FRONT RANGE WOODTURNERS



Mike Marek – Tall vase in aspen.



Grover Brown – Four finial-lidded boxes.

Steve DeJong – Square-edge compote in walnut.



Phil Houck – Natural-edge vase in apricot.



Ron & Betty Ainge – Bowl with floral pyrography in basswood.



Marti Norberg – Magic Wand (with spell).



Phil Houck – Natural-edge vase in post-oak.



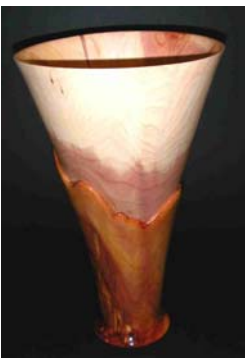
Paul Stafford – Zippered petal bowl in maple.



Fred Meyer – Ornament with crystal inlay. Donated to the Channel 6 Auction.



John Betts – Fly reel in mahogany, brass, and ebony.



Barbara Craig – Tall carved vase in juniper.



Phil Houck – Natural-edge bowl in persimmon.

FRONT RANGE WOODTURNERS



Jerry Smith – Pair of glass-lined segmented vases in dyed ash.



Pete Holtus – Three multi-sided twisted boxes.



Pete Holtus – Two multi-sided boxes. ❖

Demonstrations

Mike Mahoney demonstrated using the Kelton Bowl Saver system to turn multiple bowl blanks and then turned a platter.



Mr Mahoney.



Turning the outside of the wet blank using a 3/4" gouge with a fingernail bevel. Notice the shavings flying off.



Making sure the outside is the appropriate shape.



Discussing shape.



Bowl has been reversed. Grooves are cut with a gouge to start the bowl saving process. Grooves are

spaced approximately 10% of the finished bowl wall diameter.



Mike rough hollows the inner-most circle so that it will dry evenly.



More flying shavings.



The Kelton Bowl Saver system in place. The base is in the toolrest and lined up with the inner-most cut. The tool (shown over the bowl) has been ground with a diamond-shaped bit.

FRONT RANGE WOODTURNERS



Showing the system in action. The three rods provide leverage as Mike feeds the tool into the wood, following the curve of the tool.



Front view of bowl-saving cut. Using this system, three bowls can be created from a single blank, instead of wasting the interior as shavings.



Turning the inside of the still-wet outer-most shape using a 3/8" gouge. There is a risk of distortion as it dries, but Mike figured that the grain and wall thinness will help to minimize that risk. The spots in the photo are from flying moisture.



Another view of the push cut used to turn the inside of the bowl.



The shavings pile!

Additional notes:

- "Soft" hardwoods have the resilience and flexibility to withstand daily use as utility bowls. Maple, box elder, poplar, and myrtle are good choices.
- Mike roughs out his bowls in winter. It's hard physical work, and winter helps to slow the drying a bit to help prevent cracking.
- After roughing out the bowls, he paints them completely with green wood sealer and stacks them on the floor to dry, rotating occasionally. After about a month, he moves them to shelves for additional air flow. After about 3 months, they are ready to turn.
- The base for utility pieces must be larger than for decorative pieces. Bowls should have bases that are 40-50% of total diameter. Platters should have bases that are 70% of total diameter.

- The insides should be smooth with no abrupt changes. This will make cleaning much easier.
- Mike likes the double-bevel grind on his gouges.
- Utility pieces are sanded to 320 grit, then sprayed with a little water and sanded again.
- Mike prefers no finish, but if a finish is desired, he uses his walnut oil bowl finish. Be sure finish is food-safe and do not use a surface finish for utility bowls (such as shellac or brush-on polyurethane).❖

Rockler

Patronizing their store is the best "thank you" we can give Rockler for their generosity in letting us use their facilities for our ever-growing membership. Keep in mind that they keep the register open late on meeting nights just for us. Just be sure to complete any purchases no later than the mid-meeting break so these poor guys can start shutting down and go home.

As always – all FRW members get 10% off all items, except electrical or sale items, all the time. Just present your FRW membership card at time of purchase. (Note: This offer is only good at the Denver retail location, and is not valid for any other location or for Internet purchases.)

If you have suggestions for tools or materials that Rockler can carry, contact Rich Johnson, manager of the Denver store. Rockler web site: www.rockler.com.

FRONT RANGE WOODTURNERS

Web Stuff

The Front Range WoodTurners
Web site address:

www.frontrangewoodturners.com

Get the latest information about upcoming events, meetings, and view the excellent photos of the show and tell gallery.

Other sites of interest:

(Rky Mtn Woodturners, Ft Collins)
www.verinet.com/~drmeli/rmw.html
www.lathes.co.uk
www.woodworkingbasics.com
www.treelineusa.com
www.woodturnerscatalog.com
www.kestrelcreek.com
www.choicewoods.com
www.woodturner.com
www.woodturningonline.com
www.kazistudio.com ❖

Classifieds

Please note: All advertising in the Classifieds is free, but please be sure to notify the newsletter editor if an item is no longer for sale.

Ad Policy – All ads that are older than 3 months will be deleted, unless you contact the newsletter editor.

For Sale - Scroll Saw. Delta 40-680, 20", 6 speed, w/ stand. NEW still sealed in shipping crate. \$400. (amazon \$479). ALSO Belt Sander Porter-Cable 362VS, 4x24", Variable speed, w/ dust collector bag. NEW, still in box. \$200. (amazon \$239). Contact Richard Kuivila - 303 708-0905.

For Sale – Carb-a-tech variable speed mini-lathe, 6" swing, 12" between centers, with Bonnie Klein scroll chuck.

Low use, cabinet, extra fuses. \$200. Contact Dean Morrell at 719-638-1800. Forced to sell to raise money for medical bills for son diagnosed with Multiple Sclerosis.

For Sale – Corian. Several colors. Large enough for jigs and fixtures with a few as large as 30"x50". \$5 per sq. ft. Contact Rob Marquese at 303-255-2959.

For Sale – Delta 3 Hp Shaper (#43-455). Mobile base, dust port. 2 rail/style bit sets, 5 other cutters. Like new. Contact Don Natale at 303-810-2663. ❖

Club Information

President: Tom Wirsing
phone: 303-7179427
e-mail:
tom.wirsing@mesanetworks.net

Vice President/Program Director/Videographer Andy Zartman
phone: 303-859-0724
email: AWZartman@comcast.net

Treasurer: Jill Rice
phone: 303-838-2452
email: tree2bowl@yahoo.com

Secretary & Newsletter Editor: Alisa Limvere
phone: 303-648-3414
e-mail: alisalimvere@yahoo.com
Deadline for submitting material for inclusion in the newsletter is 15 days before the next meeting.

Membership & Publicity Chairman: Bear Limvere
phone: 303-648-3414
e-mail: Bear@BearLimvere.com

Librarian: Jim Applegate

Raffle-Wood Director: Steve Claycomb

Group Buy Coordinator: Dave Hawley
phone: 303-443-2332
email: dave_hawley@comcast.net

Shop Tour & Mentor Program Chairman: Phil Houck
phone: 303-985-4692

Internet Chairman: Brandon Mackie
email: latherunner@hotmail.com.

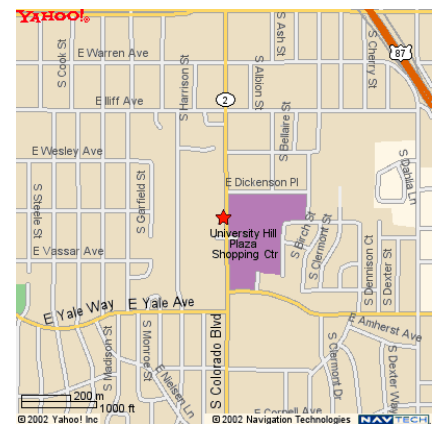
Social Chairperson: Rose Phillips
home phone: 303-740-9663 and enter 6014 during the message work, 303-715-0172

General Meeting Information

Normal meetings are the first Tuesday of every month, unless otherwise rescheduled.

Meeting place is at Rockler Woodworking & Hardware, 2553 So. Colorado Blvd. #108 Denver, CO (west side of Colorado Blvd. opposite the mall).

Meetings are 6:30 PM - 9:30 PM.





FRONT RANGE WOODTURNERS

April, 2006, Volume 6 - Number 04

Front Range WoodTurners
P.O. Box 714
Franktown, CO 80116