



# GOING 'ROUND

Front Range Woodturners Newsletter

Vol. 23, No. 9 September 2023

Editor: Brenda Blaesing

## SEPTEMBER DEMONSTRATOR –Tom Wirsing Tuesday, Sept. 5th , In Person & via Zoom

Ed Sonny Jones - [edsonnyjones333@gmail.com](mailto:edsonnyjones333@gmail.com)

Tom Wirsing was born in Roanoke, Virginia, in the Shenandoah Valley, a historic center of American furniture building and woodturning. Tom's dad was an expert on American period furniture and had a well-equipped workshop which included a lathe. Tom began turning wood as a young boy. After graduating from Roanoke College with a degree in Physics, Tom began traveling extensively. He lived and worked in Europe, Asia, and nine US States. The lathe in his dad's workshop became a distant memory.

About 30 years ago Tom found himself working for the Hewlett-Packard Company in Chicago and living in a house with a spacious basement. He bought a lathe and began turning wood again. At first he made mostly furniture but, almost by chance, he attended a demonstration by Richard Raffan, a well-known Australian woodturner. Richard took a rough piece of American black cherry timber and turned it into a wonderful bowl. Tom was hooked.

Thus began Tom's interest in creating art pieces on the lathe. He now turns primarily platters and bowls from a variety of woods. He is best known for his platters turned from figured maple.

Tom is a member of the American Association of Woodturners (AAW), a non-profit organization of woodturners which has 15,000 members worldwide. Tom served two terms on the AAW Board of Directors and two terms as AAW president. For more information on the AAW, visit [www.woodturner.org](http://www.woodturner.org). Visit Tom's web site at [www.thomaswirsing.com](http://www.thomaswirsing.com).

## WHERE TO FIND US:

Website: [www.frontrangewoodturners.org](http://www.frontrangewoodturners.org)

Facebook: <https://tinyurl.com/yacakdwa>

Ladies of the Lathe: <https://tinyurl.com/yap8m6x4>

YouTube: <https://tinyurl.com/yxem4vw9>

## THIS MONTH'S NEWS:

September Presenter .....	1-2
Club Information & Officers .....	2
Ladies of the Lathe .....	3
Fall Classes.....	3
FRW Smocks .....	3
Mentors.....	4
Group Buys.....	4
Photo Gallery .....	5-6



## CLUB INFORMATION

Front Range Woodturners is the Denver-area chapter of the AAW (American Association of Woodturners), serving woodturners throughout Colorado's Front Range. We help woodturners gain experience by providing monthly demonstrations with professional turners, mentoring, a ladies group (Ladies of the Lathe) and youth mentoring.

## MONTHLY MEETINGS

Everyone is welcome to check out one of our monthly meetings. Meetings are held on the first Tuesday of the month at Rockler Woodworking, 2553 S Colorado Blvd. #108 in Denver. Meetings start at 6:15pm.

## MEMBERSHIP DUES

Individual - \$45, Couple - \$50, Student - \$22.50.

FRW members consist of the following:

Co-Club Members	24	Lifetime Members	14
Family Members	36	Roster	47
Individual Members	132	Student Members	1
<b>Total Membership</b>	<b>254</b>		

## CLUB OFFICERS & BOARD MEMBERS

President: Robyn Herman

Vice President/Program Director: Don Prorak

Secretary: Patrick Crumpton

Treasurer: Larry Abrams

President Emeritus: Ed Sonny Jones

Club Historian: Ed Sonny Jones

Coffee Chair: Gary Starritt

Communications Chair: Pat Scott

Group Buy Coordinator: Jay Miller

Internet Chair: Pat Scott

Ladies of the Lathe Chair: Debra Higley-Feldman

Librarian: Brian Tooker

Membership Chair: Scott Schlapkohl

Mentoring Program Chair: Marty Christensen

Newsletter Editor: Brenda Blaesing

PHEOG Grant Chair: Pat Scott

Photographer: Jim Record

Publicity Chair: Robyn Herman

Shop Tour Chair: Keith Motzner

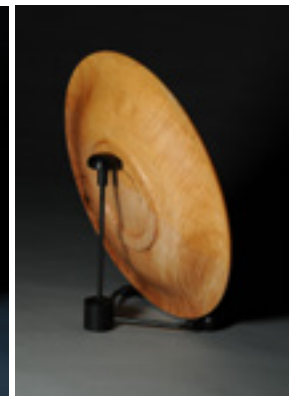
Videographer: Marty Christensen & Larry Abrams

Wood Raffle: Lavonne Kaiser

Youth Chair: Don Prorak

Tom has demonstrated at the AAW Symposium, at Turnfest in Australia, and at numerous regional symposia and chapter events.

Tom is an avid traveler. He has visited all 50 US states, over 80 countries and all seven of the world's continents. He resides with his wife Melinda in the foothills of the Colorado Rocky Mountains, where he grazes Angus cattle, builds furniture, and turns wood.

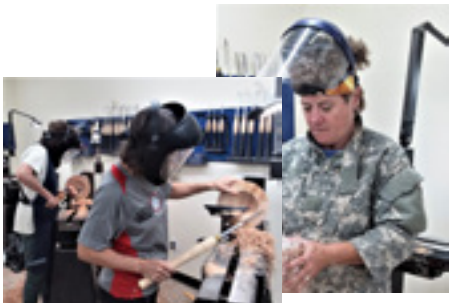


## LADIES OF THE LATHE

Debra Higley-Feldman -  
debrakhf@gmail.com



On August 1st, **Don Prorak** gave a great class on bowl turning for wet and dry wood. The wet blank was rough turned (with a wide rim and wall to account for warping while drying), packed with shavings, and stored until dry. Don also covered techniques for cutting wood on bandsaws, use of different bowls and jaw chucks, and turning techniques.



The Sept. 5th class on turning and embellishing spinning tops was canceled because of insufficient interest.

On Tuesday, Oct. 17th, **Jay Miller** will be giving a class on birdhouse and/or inside-out ornaments. Class will be at Rockler from 10:00 to 4:00. There may be a minor charge for wood for the inside-out ornaments.

## FALL CLASSES

**Don Prorak** - donprorak@comcast.net

We will have a cornucopia of great fall class offerings, something for just about every area of interest. We will be using SignUp Genius for class registration, so keep an eye on your email for the links. Please DO NOT send me an email requesting to be in the class. Classes will be held in the Rockler classroom, and will cost \$150 plus materials if needed.

Also a reminder that we are invited to join RMWT's interactive remote demo (IRD) with Ernie Conover on Thursday, September 7 at 6 PM. Ernie's topic will be Thread Chasing, and will be especially applicable to those taking the in-person class on October 11th. I'll send the Zoom link when I get it.

Wednesday, Sept 6: ~~Tom Wirsing - Platters~~  
To Be Rescheduled in early 2024

Wednesday, Oct 4: Simon Begg (Australia) -  
Square Edge Bowls

Wednesday, Oct 11: Ernie Conover - Thread Chasing

Tuesday, Nov 7: Rebecca DeGroot - Walking Turnings

Wednesday, Nov 8: Rebecca DeGroot - Walking Turnings

## FRW SMOCKS

**Jay Miller** - jaymiller9637@comcast.net

The final chance to order a smock or smocks will be at the September 5th meeting. All payments must be turned in by September 12th. Please make your check out to Front Range Woodturners (not Jay or Ted). However if you are mailing your check, please send it to Jay Miller, 9637 W. Vandeventor Dr. Littleton, CO 80128. The price of the smock is \$45.00 for the smock and a loose embroidered FWT logo patch. Add \$5.00 to have the patch sewn for you. The total for smock and patch sewn on is \$50.00.

These are quality smocks and the price is less than that from Craft Supplies or any other online retailer without our logo. You can spend \$58.00 + tax and advertise Craft Supplies or \$50.00 and advertise Front Range Woodturners.

## MENTORS

Marty Christensen -  
mecturning@gmail.com



Some FRW members have volunteered to be one-on-one mentors to help other members. No matter what skill level you are, a few hours of personalized instruction may be all you need to master a new tool or technique. Check out who is available in your area. If you're interested in being a mentor, contact Marty.

LOCATION OF MENTOR	NAME/ CONTACT INFO	AREA OF EXPERTISE
Arvada	<b>Dennis Fanning</b> dcfanning@aol.com	General
Boulder	<b>Dave Hawley</b> Dbh001@gmail.com	Beginner/ General
Brighton	<b>Don Prorak</b> donprorak@comcast.net	Beginner/ Youth
Centennial	<b>Keith Motzner</b> knotzner@me.com	Firewood into Art/ Wood Prep
Centennial	<b>Les Stern</b> sternsclass@hotmail.com	General
Central Park	<b>Ed Sonny Jones</b> edsonnyjones333@gmail.com	General/ Segmenting
Denver SW	<b>Henry Williams</b> williamshenrya@gmail.com	Spindles/ Bowls
Denver SW	<b>Phil Houck</b> houckpc@comcast.net	General/ Spindles
Denver- Rockler store	<b>Larry Abrams</b> laabrams.51@me.com	General
Highlands Ranch	<b>Rick Orr</b> rickorr.1848@yahoo.com	Boxes/Inlay/ Thread Cutting
Hudson	<b>Marty Christensen</b> mecturning@gmail.com	General
Lakewood	<b>Debra Higley</b> debrakhf@gmail.com	General
Littleton	<b>Jay Miller</b> jaymiller9637@comcast.net	General
Louisville	<b>Roger Holmes</b> roger_holmes@comcast.net	Beginner
Thornton	<b>Bob Franklin</b> Btheb66@gmail.com	General/ Stabilizing

## AUGUST MENTORING CLASS

Marty Christensen - mecturning@gmail.com

The September mentoring class will be held on Monday, August 11th from 5:00 to 7:00pm at Rockler. The topic will be the finishing and final touches of pen turning and maybe a no brass tube pen... Yes the first of its kind kitless pen..

## QUARTERLY GROUP BUYS



FRW places group buys once a quarter-in January, April, July and October-to obtain discounted pricing from the below manufacturers. Our next group buy will be in October. Jay Miller is the group buy coordinator and Ted Mellin is his assistant. See the FRW website for more info, price lists and order forms.

**Industrial Abrasives** - send orders to Jay Miller

Industrial Abrasives is our principal vendor for sanding supplies. Prices for hook & loop mandrels and discs remain the lowest in the marketplace and their backing is a heavier weight than the competition.

**Starbond** - send orders to Jay Miller

Starbond is our CA glue supplier. Our minimum order is \$100, but we receive an additional discount at \$200, making shipping free. Sign up for Starbond's newsletter to be notified of sales that beat our wholesale prices.

**Craft Supplies** - send orders to Ted Mellin

Craft Supplies sells a very wide range of products. Our minimum group purchase is \$1000. Members may not place individual orders to get a discount.

**Spence Industrial Supply** - send orders to Ted Mellin

We will be purchasing band saw blades from Spence once a year, in April, unless a member can meet the minimum order in another quarter. All blades are carbon steel flexback in 1/4" (4 tpi), 3/8"(3 tpi), or 1/2" (4 tpi) width, hook tooth, and .025"thick. Our minimum buy is 20 blades for each width in any length.

Send orders and checks to:

Jay Miller  
9637 W. Vandeventor Dr  
Littleton, CO 80128  
303-945-4306

Ted Mellin  
9043 W Coco Dr  
Littleton, CO 80128

**Individual Catalog Orders**

Two additional companies, Klingspor and Penn State Industries, offer discounts to members who wish to place individual catalog orders. To take advantage of these discounts, you must be on their list of FRW members. To be placed on the list, please sign up at a meeting or send an e-mail to Jay Miller (jaymiller9637@comcast.net).

## PHOTO GALLERY

Here are some projects that members have been working on this month.



**Debra Higley-Feldman** made a variety of spinning tops. They're mostly Schacht maple with bits of walnut, sapele, purple heart and spalted maple. Finishes are watercolor and/or acrylic paint, and walnut oil or lacquer. The acorn spinning top is hollow. The rotund one is a tippy top. The maple strip in back accelerates the spin on tops.



**Bill Jackson** made this utility box with a European birch base and walnut lid.



As part of the last LOTL class, Don Prorak gave all participants a rough-turned ash or maple bowl which had been dried for at least three months. **Brenda**



**Blaesing** finished hers (of ash) and added a black band near the rim, made from epoxy clay. It was quite a mess to turn the excess clay away, especially on a hot day when the tiny pieces of clay stuck to her like freckles. But all ended well.

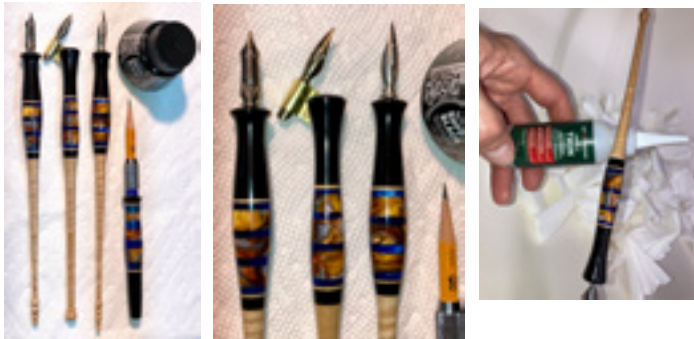
**Larry Hughes** made a number of partially open-segmented bowls out of mahogany, redwood and yellow heart. He also completed a number of ring/jewelry bowls out of walnut, mahogany and a number of colorful accents woods.



Then, two more were placed in the Evergreen Shadow Mountain Gallery. They gathered quite a bit of attention and disappeared from the shelves in less than a week. The urn was ebonized and then sanded down to show the grain of the sapele.



**Curt Vogt's** niece got married last week and both bride and groom are painters. But he does oils that take a week or more to dry and she does acrylics that dry fast. They said they wanted to find something that they could do together. Curt saw someone doing dip pen (pen and ink) with watercolors and thought they might try that or calligraphy as he is quite the history buff. Curt also made a pencil nubbin holder to match. (He knows that would make Bear excited because he steals all his pencils from the Putt-Putt Golf Course.) Over two dozen layers of Starbond Heavy Thin CA gave a rippled texture on the surface. Curt sanded it down with 500 grit up to 1200 and then started the polishing with micromesh and then the buffer. This Starbond is nothing like the old regular CA to do finishing with. No burning of the eyes and time to wipe the paper towel back and forth to apply. Then a very quick spritz of Starbond Accelerator between coats. The pencil holder only got about ten coats of CA, as it is not expected to contact water. The woods were ebony, curly maple, and acrylic with a CA finish.



## ROCKLER

Patronizing the Rockler store is the best thank you we can give Rockler for their generosity in letting us use their facilities for our meetings. They keep the register open late on meeting nights just for us. but be sure to complete any purchases no later than the mid-meeting break. All FRW members get 10% off all items, except electrical or sale items, all the time. Just present your FRW membership card at time of purchase. Note: This offer is good only at the Denver store and is not valid at other Rockler stores or for online purchases.

## AAW MEMBERSHIP

Front Range Woodturners is a chapter of the American Association of Woodturners. Club members may become individual members of AAW, if desired. Benefits include resources, weekly emails on various woodturning topics, and the quarterly American Woodturning magazine. See AAW's website at [www.woodturner.org](http://www.woodturner.org) for more information.

## NEWSLETTER SUBMISSIONS

Brenda Blaesing - [b.frezeman@yahoo.com](mailto:b.frezeman@yahoo.com)

Articles and photos for the monthly newsletter are always welcome. Please email your submissions by the 26th of the month for inclusion in the next issue.