



# GOING 'ROUND

Front Range Woodturners Newsletter

Vol. 23, No. 8 August 2023

Editor: Brenda Blaesing

## **AUGUST DEMONSTRATOR –Dan Swaim Tuesday, August 1st , In Person & via Zoom**

Ed Sonny Jones - [edsonnyjones333@gmail.com](mailto:edsonnyjones333@gmail.com)  
Dan is a RMWT (Rocky Mountain Wood Turners) mentor for segmented and stave-constructed wood turning. He started turning in 2014 and has been a member of RMWT and AAW since then as well. Using experience as a furniture maker, he focuses on “constructed forms” that utilize grain orientation as a design feature. He has demonstrated twice for RMWT and has been recognized several times in local wood turning shows. One of Dan’s jigs has been featured in a full article in the AAW journal, *American Woodturner*.



Dan is interested in assisting members with improving safety and efficiency in segmented turning. Jigs, fixtures and techniques can be shared that safely streamline the segmenting process and improve accuracy. Mentoring may be in person at your shop or his, or virtually via Facetime if you prefer. You can also email Dan or pick his brain at the RMWT monthly meetings. He is happy to discuss any problems you may encounter. Dan is in southeast Fort Collins and is available at [danjswaim@aol.com](mailto:danjswaim@aol.com) or 970-689-4071.

## **WHERE TO FIND US:**

Website: [www.frontrangewoodturners.org](http://www.frontrangewoodturners.org)

Facebook: <https://tinyurl.com/yacakdwa>

Ladies of the Lathe: <https://tinyurl.com/yap8m6x4>

YouTube: <https://tinyurl.com/yxem4vw9>

## **THIS MONTH'S NEWS:**

August Presenter .....	1-2
Club Information & Officers .....	2
Fall Classes.....	2
Ladies of the Lathe .....	3
Shop Tours .....	3
From the Web .....	3
Mentors.....	4
Group Buys .....	4
Photo Gallery .....	5-7



## CLUB INFORMATION

Front Range Woodturners is the Denver-area chapter of the AAW (American Association of Woodturners), serving woodturners throughout Colorado's Front Range. We help woodturners gain experience by providing monthly demonstrations with professional turners, mentoring, a ladies group (Ladies of the Lathe) and youth mentoring.

## MONTHLY MEETINGS

Everyone is welcome to check out one of our monthly meetings. Meetings are held on the first Tuesday of the month at Rockler Woodworking, 2553 S Colorado Blvd. #108 in Denver. Meetings start at 6:15pm.

## MEMBERSHIP DUES

Individual - \$45, Couple - \$50, Student - \$22.50.

FRW members consist of the following:

Co-Club Members	24	Lifetime Members	14
Family Members	36	Roster	47
Individual Members	132	Student Members	1
<b>Total Membership</b>	<b>254</b>		

## CLUB OFFICERS & BOARD MEMBERS

President: Robyn Herman

Vice President/Program Director: Don Prorak

Secretary: Patrick Crumpton

Treasurer: Larry Abrams

President Emeritus: Ed Sonny Jones

Club Historian: Ed Sonny Jones

Coffee Chair: Gary Starritt

Communications Chair: Pat Scott

Group Buy Coordinator: Jay Miller

Internet Chair: Pat Scott

Ladies of the Lathe Chair: Debra Higley-Feldman

Librarian: Brian Tooker

Membership Chair: Scott Schlapkohl

Mentoring Program Chair: Marty Christensen

Newsletter Editor: Brenda Blaesing

PHEOG Grant Chair: Pat Scott

Photographer: Jim Record

Publicity Chair: Robyn Herman

Shop Tour Chair: Keith Motzner

Videographer: Marty Christensen & Larry Abrams

Wood Raffle: Lavonne Kaiser

Youth Chair: Don Prorak

Be sure to come to our meeting prepared by previewing either of Dan's videos on YouTube:

Dan Swaim - Shallow Stave Bowls



Dan Swaim - Segmented Turning: Design, Efficiency & Safety

## FALL CLASSES

Don Prorak - [donprorak@comcast.net](mailto:donprorak@comcast.net)

We will have a plethora of great class offerings in the fall, something for just about every area of interest. We will be using SignUp Genius for class registration, so keep an eye on your email for the links. Please DO NOT send me an email requesting to be in the class. Classes will be held in the Rockler classroom, and will cost \$150.

Wednesday, Sept 6: Tom Wirsing - Platters

Wednesday, Oct 4: Simon Begg (Australia) - Topic TBA

Wednesday, Oct 11: Ernie Conover: Thread Chasing

Tuesday, Nov 7: Rebecca DeGroot - Walking Turnings

Wednesday, Nov 8: Rebecca DeGroot - Walking Turnings

## ROCKLER

Patronizing the Rockler store is the best thank you we can give Rockler for their generosity in letting us use their facilities for our meetings. They keep the register open late on meeting nights just for us. but be sure to complete any purchases no later than the mid-meeting break. All FRW members get 10% off all items, except electrical or sale items, all the time. Just present your FRW membership card at time of purchase. Note: This offer is good only at the Denver store and is not valid at other Rockler stores or for online purchases.

## LADIES OF THE LATHE

Debra Higley-Feldman -  
debrakhf@gmail.com



Larry Hughes taught a great class on segmented turning on Saturday, June 17th. He spent a lot of time on pre-class preparation and gave all participants a detailed handout as well as a goodie box of preglued segments, to-be-glued segments and a variety of other materials. We discussed the best woods for bowls and other forms, precision miter cuts using a sled and scales, segmenting techniques and many other tips and tricks.



The next LOTL will be on Tuesday, August 1st at Rockler. Don Prorak will teach us methods for turning bowls using wet and dry wood.

## SHOP TOURS

Keith Motzner -  
ShopTour@frontrangewoodturners.org

Our most recent shop tour was held on July 15th at Craig Choun's shop in the foothills near Aspen Park. We all enjoyed meeting new members and old friends over a bbq lunch.



Don't miss next month's Shop Tour on August 26th at Les Stern's shop in Centennial.

Shop tours are a great way for both old and new members to get better acquainted and to see how the other half turns, as well as seeing other members tools and equipment. You may even pick up some new ideas or techniques for your own shop.

We are not limited to just one shop tour per month, so if there is more interest, members are welcome to contact me to schedule a date. Contact ShopTour@frontrangewoodturners.org.

## FROM THE WEB

### All About Flexible CA Glue

Starbond KEG-500 Flexible Heavy Medium CA Glue is an ethyl cyanoacrylate super glue that adheres well to flexible material. Along with impact- and shock-absorbing properties, it's four times stronger than standard CA glue. With a higher resistance to heat, humidity and natural weathering, it's the ideal glue for heavy bonding. Depending on the material to be bonded and the amount of adhesive being used, bonding time may be up to one minute. Starbond



Accelerator is recommended to speed up bonding time.

This glue is useful for bonding dissimilar materials such as wood, metal, glass and rubber. It's perfect for repairing and filling cracks, voids, inclusions and knots in wood. It's also useful for granite, marble and quartz repair, installing cue tips onto pool cues, bonding kayak panels and gluing flies for fishing.

## MENTORS

Marty Christensen -  
mecturning@gmail.com



Some FRW members have volunteered to be one-on-one mentors to help other members. No matter what skill level you are, a few hours of personalized instruction may be all you need to master a new tool or technique. Check out who is available in your area. If you're interested in being a mentor, contact Marty.

LOCATION OF MENTOR	NAME/ CONTACT INFO	AREA OF EXPERTISE
Arvada	<b>Dennis Fanning</b> dcfanning@aol.com	General
Boulder	<b>Dave Hawley</b> Dbh001@gmail.com	Beginner/ General
Brighton	<b>Don Prorak</b> donprorak@comcast.net	Beginner/ Youth
Centennial	<b>Keith Motzner</b> knotzner@me.com	Firewood into Art/ Wood Prep
Centennial	<b>Les Stern</b> sternsclass@hotmail.com	General
Central Park	<b>Ed Sonny Jones</b> edsonnyjones333@gmail.com	General/ Segmenting
Denver SW	<b>Henry Williams</b> williamshenrya@gmail.com	Spindles/ Bowls
Denver SW	<b>Phil Houck</b> houckpc@comcast.net	General/ Spindles
Denver- Rockler store	<b>Larry Abrams</b> laabrams.51@me.com	General
Highlands Ranch	<b>Rick Orr</b> rickorr.1848@yahoo.com	Boxes/Inlay/ Thread Cutting
Hudson	<b>Marty Christensen</b> mecturning@gmail.com	General
Lakewood	<b>Debra Higley</b> debrakhf@gmail.com	General
Littleton	<b>Jay Miller</b> jaymiller9637@comcast.net	General
Louisville	<b>Roger Holmes</b> roger_holmes@comcast.net	Beginner
Thornton	<b>Bob Franklin</b> Btheb66@gmail.com	General/ Stabilizing

## AUGUST MENTORING CLASS

Marty Christensen - mecturning@gmail.com  
The August mentoring class will be held on Monday, August 7th from 5:00 to 7:00pm at Rockler. The topic will be advanced pen turning.

## QUARTERLY GROUP BUYS



FRW places group buys once a quarter-in January, April, July and October-to obtain discounted pricing from the below manufacturers. Our next group buy will be in October. Jay Miller is the group buy coordinator and Ted Mellin is his assistant. See the FRW website for more info, price lists and order forms.

**Industrial Abrasives** - send orders to Jay Miller  
Industrial Abrasives is our principal vendor for sanding supplies. Prices for hook & loop mandrels and discs remain the lowest in the marketplace and their backing is a heavier weight than the competition.

**Starbond** - send orders to Jay Miller  
Starbond is our CA glue supplier. Our minimum order is \$100, but we receive an additional discount at \$200, making shipping free. Sign up for Starbond's newsletter to be notified of sales that beat our wholesale prices.

**Craft Supplies** - send orders to Ted Mellin  
Craft Supplies sells a very wide range of products. Our minimum group purchase is \$1000. Members may not place individual orders to get a discount.

**Spence Industrial Supply** - send orders to Ted Mellin  
We will be purchasing band saw blades from Spence once a year, in April, unless a member can meet the minimum order in another quarter. All blades are carbon steel flexback in 1/4" (4 tpi), 3/8"(3 tpi), or 1/2" (4 tpi) width, hook tooth, and .025"thick. Our minimum buy is 20 blades for each width in any length.

Send orders and checks to:

Jay Miller  
9637 W. Vandeventor Dr  
Littleton, CO 80128  
303-945-4306

Ted Mellin  
9043 W Coco Dr  
Littleton, CO 80128

### Individual Catalog Orders

Two additional companies, Klingspor and Penn State Industries, offer discounts to members who wish to place individual catalog orders. To take advantage of these discounts, you must be on their list of FRW members. To be placed on the list, please sign up at a meeting or send an e-mail to Jay Miller (jaymiller9637@comcast.net).

## PHOTO GALLERY

Here are some projects that members have been working on this month.

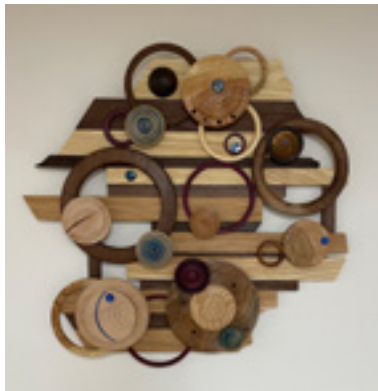


**Kenneth Rollins** made these two bowls this month. On the left is a maple bowl with a lid made from Schacht scrap plus a dark ring of ipe in the middle. On the right is another Schacht scrap bowl. The Schacht logo on the bottom was already on a piece of the scrap, so he incorporated it into the design.



**Blaine Blaesing** made this tall, footed weed pot from Eastern red cedar obtained at a recent FRW wood raffle. Measuring 15.5" high, it was finished with many coats of wipe-on poly.

**Jo Murto** made this sculpture entitled Integrated Orbits 3.0. Measuring 24" x 24", it's made from various woods on ash and walnut slats.



**Don Prorak** was messing around practicing, and decided to try putting two captive rings on these crazy forms. Sanding and finish to come.

**Roy Halling** made a mallet and a bowl recently. The black grooves on both items were made by initial cuts with a skew chisel, then he used an 18" long piece of 14 gauge copper wire attached to wooden handles on the ends, to burn the grooves while the wood was spinning live, before sanding.



The mallet is honey locust, with head 4-3/4" long, 2-1/4" diam; handle is 10-1/2" long (thru head), 1-1/4" diam. It came



from a tree felled in his Littleton neighborhood last fall. The bowl is black cherry, 9-3/4" diam, 3-3/4" tall. The two knots needed filling with epoxy and wood filler before final sanding. Roy brought the blank with him from the eastern US when he moved here a couple years ago. Both pieces finished with Boos Block Mystery Oil.



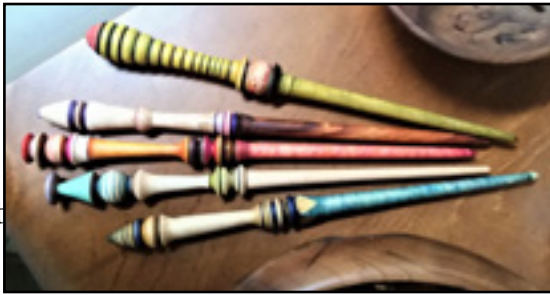
Currently in Nebraska, **Steve Claycomb** has been making miniature hats like Sonny Jones demonstrated in a meeting. The back row left



to right are cottonwood, maple and elm and the one in front is cherry. They range from 5" to 8" in diameter.

**Debra Higley-Feldman** made several wands and a segmented bowl. The 14" Schacht maple/koa wands are what happens when you give a friend one Harry-Potter-themed wand and she shows it to her relatives.

The finish is Tenbow watercolor pen, mica, and walnut oil. The 5"x3"



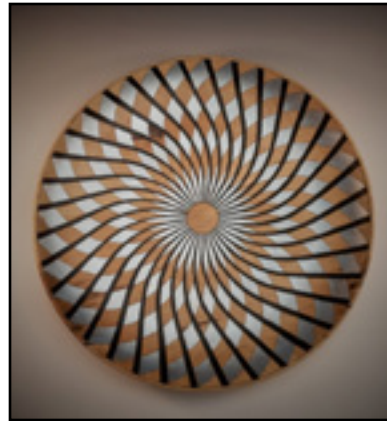
segmented bowl of many woods (oak base) is finished with Danish wood oil and carnauba. It was from the LOTL class on segmented turning that Larry Hughes taught (thanks, Larry!).



Joe Clark's family gets him into all kinds of things. His wife's 60th HS reunion is coming up and she's organizing it. Her school colors were blue and white so she suggested that he make pens in blue and white for the 60 attendees. After some experiments they settled on these blue and white aqua-pearl pen blanks. But they were translucent approaching transparent in places. So he painted the barrels with a matte white primer that made the barrels all but invisible without interfering with the pearlescent chatoyance of the material. Joe played around with the shapes a bit and used gold, chrome, and graphite hardware to add some variety.



**Scott DeWeese** completed these three complex pieces this month. The first is a 13" maple platter with pyrography, India ink and acrylic paint, finished with spray lacquer. The second is a wide-rimmed 14" maple bowl with pyrography and finished with Mahoney's walnut oil. The third is an 18" maple platter with pyrography and India ink markings and finished with spray lacquer.



## NEWSLETTER SUBMISSIONS

Brenda Blaesing - [b.frezeman@yahoo.com](mailto:b.frezeman@yahoo.com)

Articles and photos for the monthly newsletter are always welcome. Please email your submissions by the 26th of the month for inclusion in the next issue.

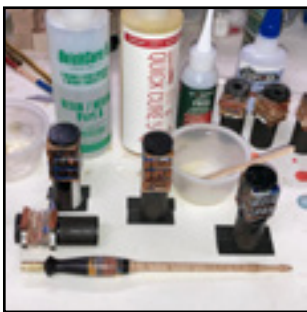
Projects for **Curt Vogt** in toasty Texas started out with making things to make other things. First up was a crosscut sled for his table saw. Wow! Totally worth it for the accuracy and clean cuts he's able to get now. Inca aluminum runners because of the humidity fluctuations there. Thank you oh so much to Schacht Spindle Co. for the plywood cutoffs and wood they donate to the club!!!!



Next, he started to practice making dip pens in preparation for a set of pens as a wedding present for two artists. Good thing he practiced! Some things went smoothly and others did not. He quickly decided he needed was a pin chuck for working closed-end pens. About half an hour with some stainless steel rod and a hand file got him set up. The lathe setup photo has it in use with a Jacob's Chuck at the headstock. CAUTION! Remember, you need to secure the Jacobs Chuck into the Morse Taper with pressure from the tailstock and a live center or use a drawbar through the headstock. That was a lesson he learned the hard way a few years back...



With his new crosscut sled, he was able to make custom stack laminations like you might use for making a pen kit. One of my stack patterns has 17 layers. Oh! That was a slippery, gooey mess with epoxy, so he decided to try CA glue. Good thing he made six blanks, as only two have all the parts lined up correctly for the diameter he needed. Epoxy gives more time to line things up properly.



Dip pens for pen & ink drawing or calligraphy of ebony, acrylic, walnut, curly maple, two all maple pens with colored dye, all finished with Starbond Heavy Thin CA.

**Brenda Blaesing** wanted to do more decorating on her wood pieces but was unsure of what burs to use for different purposes. So she took a three-day power carving course in Moscow, Idaho with Kristin LeVier, known for her nature-inspired wood sculpture. Not the easiest place to get to, Brenda flew to Spokane and rented a car for the 90-minute drive to Moscow. Her rental car turned out to be a Dodge Challenger, though she didn't get to test out its power on the 25-35 mph roads on the scenic route through the Palouse region. Not that she needed to go faster, she stopped every few minutes to take photos of the rolling hills, fields and many shades of green.

The first day started with learning burs and their uses, then creating test boards to try out different textures. Low field painting and dry brush painting were also discussed. The second day focused on relief carving and undercutting the edges to create shadows. On the third day even more sawdust was created by trying sculptural power carving and making spoons. Throughout the workshop were short presentations on design considerations, color/finish options, metal leaf, fixing mistakes and more.



Once back home, Brenda started small, by adding some decoration to older pieces. Then she carved the exterior and rim of a small ash bowl, learning why closed-grain woods are much better for carving. She eventually got the bowl to where she was happy with it. She hasn't finished any spoons yet but has a few in progress.

