



# GOING 'ROUND

Front Range Woodturners Newsletter

Vol. 22, No. 1 January 2022

Editor: Brenda Blaesing

## JANUARY DEMONSTRATOR – DAVE LANDERS

Tuesday, January 4th via Zoom

Ed Sonny Jones - edsonnyjones333@gmail.com

We are fortunate to have Dave Landers as our January demonstrator. Like so many woodturners, Dave's passion for woodworking began in his father's shop. In the late 1980s, Dave sold a small benchtop metal lathe he had inherited. He used the money to purchase materials to build a wood lathe using plans he found in a wood magazine. More resourceful than most, Dave used that homemade lathe for around 20 years. Dave confesses now that because of his inexperience, he pushed that early lathe to its limits and might have pushed it a little further than he should have safely.

Dave is self-taught and jokes that his teacher didn't know anything. Dave's early lessons came from books. Richard Raffin and David Ellsworth were early influences. Many woodworking publications also improved his efforts, but he credits his progression to having joined the Rocky Mountain Woodturning Club and AAW in 2014.

Despite his more than four decades of turning, Dave still considers himself as a hobbyist. In the past few years Dave has been able to support his hobby with art markets and demonstrations. He has always enjoyed the instant gratification of turning. He worked as a software engineer until retiring earlier this year, and woodturning was a way for him to create without a blueprint. The idea that one can turn a piece of wood into something from start to finish is still very pleasing. Dave especially enjoys taking a piece of wood that others might not want and finding what is inside. The grain figuring, bark inclusions, holes, really any imperfection in the wood can be accentuated

## WHERE TO FIND US:

Website: [www.frontrangewoodturners.org](http://www.frontrangewoodturners.org)

Facebook: <https://tinyurl.com/yacakdwa>

Ladies of the Lathe: <https://tinyurl.com/yap8m6x4>

YouTube: <https://tinyurl.com/yxem4vw9>

## THIS MONTH'S NEWS:

January Demonstrator .....	1-2
Club Information & Officers .....	2
Ladies of the Lathe .....	3
Librarian's Corner .....	3
Mentors.....	4
Upcoming Demos .....	5
Group Buys .....	5
Photo Gallery .....	6-8
In Memorium.....	9



## CLUB INFORMATION

Front Range Woodturners is the Denver-area chapter of the AAW (American Association of Woodturners), serving woodturners throughout Colorado's Front Range. We help woodturners gain experience by providing monthly demonstrations with professional turners, mentoring, a ladies group (Ladies of the Lathe) and youth mentoring.

## MONTHLY MEETINGS

Everyone is welcome to check out one of our monthly meetings-wearing a mask. Meetings are held on the first Tuesday of the month at Rockler Woodworking, 2553 S Colorado Blvd. #108 in Denver. Meetings start at 6:15pm.

## MEMBERSHIP DUES

Individual - \$45, Couple - \$50, Student - \$22.50.

FRW members consist of the following:

Co-Club Members	15	Lifetime Members	14
Family Members	36	Roster	48
Individual Members	116	Student Members	2
<b>Total Membership</b>			<b>231</b>

## CLUB OFFICERS & BOARD MEMBERS

President: Robyn Herman

Vice President/Program Director: Jay Miller

Secretary: Patrick Crumpton

Treasurer: Larry Abrams

President Emeritus: Ed Sonny Jones

Club Historian: Joe Levy

Coffee Chair: Gary Starritt

Communications Chair: Jim Proud

Group Buy Coordinator: Don Prorak

Internet Chair: Open

Ladies of the Lathe Chair: Debra Higley-Feldman

Librarian: Bob Britt

Membership Chair: Mike Mullen

Mentoring Program Chair: Marty Christensen

Newsletter Editor: Brenda Blaesing

PHEOG Grant Chair: Ken Rollins

Photographer: Jim Record

Publicity Chair: Jay Miller

Shop Tour Chair: Al Murphy

Videographer: Richard Kuivila

Wood Raffle: Lavonne Kaiser

Youth Chair: Don Prorak

into art. Dave considers it his way of collaborating with nature to create something beautiful or useful and give that piece of wood a second life. He recalls that one of his favorite hollow forms was made from a piece of mesquite that someone had given him. When he first cut into the wood, he discovered a large cavity left by an ant colony. The ants had done most of the hollowing for him! There was very little wood left on the bottom which made securing it to the lathe difficult at best. But Dave persevered and after picking the form up from the shop floor several times, he was finally able to secure it to the lathe and finish.

For Dave, enjoyment now comes from trying to learn and improve. He will often set a new piece on the ledge at the top of the stairs in his house for several days so that he sees it as he passes by, allowing him to evaluate what works and what doesn't. This works better for him than staring at the form in the shop.

His development continues. Dave was scheduled to do a demo at the Pueblo club in April 2020. The Covid lockdown forced him to learn a new set of skills. He had to scramble, but he was able to come up with enough gear to do his first interactive remote demo on Zoom. The next night, the Rocky Mountain Woodturning Club had a Covid cancelation and Dave was able repeat his Zoom demo, though admittedly his internet provider added a lot to his stress.

For our club's January demo, Dave will demonstrate his 3-piece goblet. For this project, he will turn a small bowl, a base and a stem. The demo includes both face work (bowl turning), spindle turning and techniques for holding small parts on the lathe. Dave explains that this project gives him an "excuse" to practice spindle turning. His desire to showcase small special pieces of figured wood and burls required him to learn to turn the small delicate goblet stems.



## LADIES OF THE LATHE Tuesday, January 11th

Debra Higley-Feldman -  
debrakhf@gmail.com



Starting in January, LOTL can no longer meet at Rockler on our usual Saturday mornings. A new corporate mandate dictates only Rockler classes be held on weekends. We can, however, meet on weekdays and evenings. So the first LOTL class for 2022 is scheduled for Tuesday, January 11th from 10:00 to 3:00. **Jessica Edwards** has kindly offered to teach us how make gnomes from wood and other bits.



Class sizes are currently limited to five people due to Covid. We will revisit class scheduling with perhaps a hybrid of weekday/evenings/outdoor (non-turning) and other events. Recommendations for classes and scheduling are welcome.

## LIBRARIAN'S CORNER

Bob Britt -  
AsWoodTurns80@yahoo.com



As we welcome in a new year let us also welcome in our newly elected Assistant Librarian, Tom Fremgen. Mike Busse continues to serve faithfully as he has for many years and Bill Smith also adds energy to your library team. Tom will be in serious training this year in preparation to take over the responsibilities that yours truly will have held for nine years. We can reflect back on six months of curbside pick-up for club library materials and finally a return to more normal operation for the final six months of 2021. If you find yourself headed towards Rockler anytime

this month kindly remember to take along library items that might be overdue. We will be checking the drop box periodically and will process any titles returned, in preparation for a physical inventory of all media.

Your librarian and assistants look forward to a more normal and somewhat busier new year, Because we are not completely through this pandemic, there still could be some surprises ahead. Arrival of the monthly issue of *Woodturning* magazine from the U.K. is currently running three to four weeks behind schedule. Production of DVDs related to turning has slowed to a trickle as new technology coupled with higher production costs seems to have brought about the beginning of the next chapter for how we view and learn this craft. If you notice a new title (regardless of the medium) kindly send a short e-mail to Bob Britt for further review and possible addition to the club's resources. Thanks to all who made suggestions throughout the past year.

Just arrived - AAW-30, *Tips and Tricks for Woodturners* - This latest publication from AAW is a ninety-page collection of articles that have been previously published in *American Woodturner*. It has been divided into seven sections: Workholding, Tool Storage and Organization, Tool Making and Sharpening, Sanding and Finishing, Project Tips, Lathe Fixtures & Accessories and finally a catch-all: Other Great Ideas. Small photos accompany each short article. Definitely a change of pace from most of our titles. Have a look for yourself.

ALERT: please note a change to my personal email as the current one will be phased out over the next three to four months. Effective immediately, the new e-mail for Bob Britt is as follows:

[AsWoodTurns80@yahoo.com](mailto:AsWoodTurns80@yahoo.com)

Happy New Year to all.

## SPOTLIGHT ON WOODTURNING

On Friday, December 10th, the night of our holiday party, there was a story on Channel 7 news about FRW member **Jim Olson**. During the interview, Jim mentioned Front Range Woodturners and Ladies of the Lathe. Check it out here:

<https://www.thedenverchannel.com/news/local-news/expressing-creativity-by-turning-trees-into-art-by-literally-turning-them>



## MENTORS

Marty Christensen -  
[meturning@gmail.com](mailto:meturning@gmail.com)



Quite a few FRW members have volunteered to be one-on-one mentors to help other members. No matter what skill level you are, a few hours of personalized instruction may be all you need to master a new tool or technique. Check out who is available in your area. If you'd like to volunteer as a mentor, contact Marty.

LOCATION OF MENTOR	NAME/ CONTACT INFO	AREA OF EXPERTISE
Arvada	<b>Dennis Fanning</b> <a href="mailto:dcfanning@aol.com">dcfanning@aol.com</a>	General
Boulder	<b>Dave Hawley</b> <a href="mailto:Dbh001@gmail.com">Dbh001@gmail.com</a>	Beginner/ General
Brighton	<b>Don Prorak</b> <a href="mailto:donprorak@comcast.net">donprorak@comcast.net</a>	Beginner/ Youth
Centennial	<b>Keith Motzner</b> <a href="mailto:kmotzner@me.com">kmotzner@me.com</a>	Firewood into Art/ Wood Prep
Centennial	<b>Les Stern</b> <a href="mailto:sternsclass@hotmail.com">sternsclass@hotmail.com</a>	General
Centennial	<b>Scott Thomsen</b> <a href="mailto:thomsen-s@comcast.net">thomsen-s@comcast.net</a>	Hand-Threading/ Segmenting
Central Park	<b>Ed Sonny Jones</b> <a href="mailto:edsonnyjones333@gmail.com">edsonnyjones333@gmail.com</a>	General/ Segmenting
Denver SW	<b>Henry Williams</b> <a href="mailto:williamshenrya@gmail.com">williamshenrya@gmail.com</a>	Spindles/ Bowls
Denver SW	<b>Phil Houck</b> <a href="mailto:houckpc@comcast.net">houckpc@comcast.net</a>	General/ Spindles
Denver- Rockler store	<b>Larry Abrams</b> <a href="mailto:laabrams.51@me.com">laabrams.51@me.com</a>	General
Hudson	<b>Marty Christensen</b> <a href="mailto:meturning@gmail.com">meturning@gmail.com</a>	General
Littleton	<b>Jay Miller</b> <a href="mailto:jaymiller9637@comcast.net">jaymiller9637@comcast.net</a>	General
Louisville	<b>Roger Holmes</b> <a href="mailto:roger_holmes@comcast.net">roger_holmes@comcast.net</a>	Beginner
Thornton	<b>Bob Franklin</b> <a href="mailto:Btheb66@gmail.com">Btheb66@gmail.com</a>	General/ Stabilizing
Westminster	<b>Mike Skiba</b> <a href="mailto:mrpsmj@gmail.com">mrpsmj@gmail.com</a>	General

## FRW BOARD MEETING

**Sunday, January 2nd via Zoom**

I hope everyone had a safe and wonderful Christmas and I hope you will all have a spectacular New Year. Our next board meeting will be a zoom meeting on Sunday, January 2nd at 9:00am. You will receive a zoom invite in the upcoming days. This will be a special meeting because it will be held on a Sunday, and more importantly I will hand over the reigns to our new president. Please join us to welcome Robyn!

Keep turning,  
Ed Sonny Jones  
President (for a few more days)

## ROCKLER

Patronizing the Rockler store is the best thank you we can give Rockler for their generosity in letting us use their facilities for our meetings. They keep the register open late on meeting nights just for us. but be sure to complete any purchases no later than the mid-meeting break. All FRW members get 10% off all items, except electrical or sale items, all the time. Just present your FRW membership card at time of purchase. Note: This offer is good only at the Denver store and is not valid at other Rockler stores or for online purchases.

## NEWSLETTER SUBMISSIONS

Brenda Blaesing - [b.frezeman@yahoo.com](mailto:b.frezeman@yahoo.com)

Articles and photos for the monthly newsletter are always welcome. Please email your submissions by the 26th of the month for inclusion in the next issue.

## UPCOMING DEMOS

Don Prorak - [donprorak@comcast.net](mailto:donprorak@comcast.net)

I want to thank FRW for allowing me to serve as VP/Program Director for the past two years and for the honor of receiving the John Perkins award. COVID-19 certainly made it a challenge, but it was a gratifying and enriching experience. I am pleased to leave the position in the capable hands of Jay Miller. I will continue as Youth Mentor and also take on the Group Buy function.

Our upcoming demonstrators are:

January: Dave Landers - [via Zoom due to safety concerns](#)

February: Matt Monaco (demo & hands-on class)

March: Bear Limvere

## YOUTH MENTORING

The first part of the school year we focused on spindle techniques and projects. Just before the holiday break we started on bowls, aiming for a pleasing outside curve, and a functional tenon (photo). When we resume in January, we will work on hollowing the bowl, removing the tenon and finishing the foot. Thanks to Keith Motzner, who donated three boxes of bowl blanks for the class.



## PHEOG GRANTS

Kenneth Rollins - [colkdr@yahoo.com](mailto:colkdr@yahoo.com)

The PHEOG grant is a chance for the club to gain new woodturning skills. We do this by offering members a grant to attend any relevant training and share that learning with the club. To be eligible for a grant you must be a member for at least a year (member number less than 947), pay your 2022 dues, and submit an online application using the FRW website. The application deadline is February 15th, grants will be announced at the March meeting.

## QUARTERLY GROUP BUYS



FRW places group buys once a quarter—in January, April, July and October—to obtain discounted pricing from the below manufacturers. Our next group buy will be in January. Don Prorak is the group buy coordinator and Ted Mellin is his assistant. See the FRW website for more info, price lists and order forms.

**Industrial Abrasives** - send orders to Don Prorak  
Industrial Abrasives is our principal vendor for sanding supplies. Prices for hook & loop mandrels and discs remain the lowest in the marketplace and their backing is a heavier weight than the competition.

**Starbond** - send orders to Don Prorak  
Starbond is our cyanoacrylate (CA) glue supplier. Our minimum order is \$100, but we receive an additional discount at \$200, making shipping and handling essentially free.

**Wood Carvers Supply** - send orders to Don Prorak  
All types of woodworking tools are available from this company. We receive a discount on everything in their catalog.

**Craft Supplies** - send orders to Ted Mellin  
Craft Supplies sells a very wide range of products. Our minimum group purchase is \$1000. Members may not place individual orders using the club's ID to get a discount.

**Spence Industrial Supply** - send orders to Ted Mellin  
We will be purchasing band saw blades from Spence in April and October only, unless a member can meet the minimum order in another quarter. All blades are carbon steel flexback in 1/4" (4 tpi), 3/8" (3 tpi), or 1/2" (4 tpi) width, hook tooth, and .025" thick. Our minimum buy is 20 blades for each width in any length.

Send orders and checks to:

Don Prorak  
24000 E 155th Way  
Brighton, CO 80603  
303-638-6631

Ted Mellin  
9043 W Coco Dr  
Littleton, CO 80128

### Individual Catalog Orders

Two additional companies, Klingspor and Hartville Tool, offer discounts to members who wish to place individual catalog orders. See the website for more information.

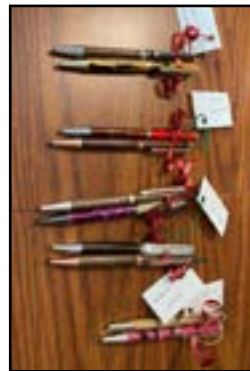


## PHOTO GALLERY

Here are some projects that members have been working on this month.



**Donna Kitchens** made these gnomes of walnut and maple.



**Gordon Dalby** made about 24 of these for Christmas gifts.



**Debra Higley-Feldman** made this 2" ornament of Schachht maple, turquoise, and lace agate. She also made a 9" bowl of Western Red Cedar and turquoise. Her shop still smells of cedar!



**Jill Rice** made this winged bowl and small box. The second photo is an enlargement of the top of



the box. She bought the wood purported to be bloodwood. But other FRW members disagreed on the type of wood, so it's unknown. The other two pieces are koa and hickory.



**Jessica Edwards** worked on quite a few Christmas projects: little trees, ornaments, an oak pizza cutter and a closet for her daughter's doll clothes.

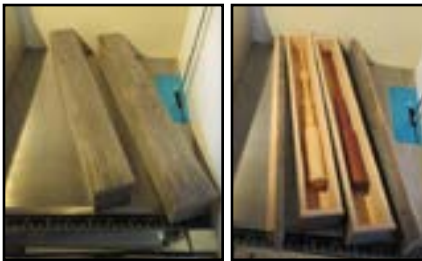


**Joe Levy** made this foot massage roller for his ballerina. It was made from willow.

**Dale Quakenbush** was busy this month, mostly making Christmas gifts: a couple of candle sticks using scrub oak from the desert and honey locust,



an elm hollow form with the grain carved out by hand



boxes made from a weathered old fir beam, maple and mahogany.

**Henry Williams** made a shallow bowl inlaid with a couple butterflies using the method Pat Scott has demonstrated. Made from a 13" maple crotch, he also filled the crack with brass powder.



and painted with milk paint and lacquer. Lastly are a couple of magic wands in simple bandsaw



**Dave Woodlee** turned these live edge bowls. Starting from the top of the first picture the woods are ash, maple, juniper and black walnut.



**Scott DeWeese** worked on a variety of projects in December. Most pieces were turned from cottonwood and some are dyed. The natural color and purple platter is from myrtle. The basket of illusion shards are mounted on boards in the Shou sugi ban style.





**Ed Sonny Jones** made this 19.75" board for a neighbor out of Schact maple and mahogany.



## AAW MEMBERSHIP

Front Range Woodturners is a chapter of the American Association of Woodturners. Club members may become individual members of AAW, if desired. Benefits include resources, weekly emails on various woodturning topics, and the quarterly American Woodturning magazine. See AAW's website at [www.woodturner.org](http://www.woodturner.org) for more information.



**Mickey Jackson** was inspired by Ron Ainge's October demo on turning a lighted ornament. He made this centerpiece for his daughter's sister-in-law to give as a gift. It is about 12" high and about 10" in diameter. The body is basswood, with balsa Christmas trees, top and bottom maple and topper tree is aspen. The tree on top is

threaded so it can be removed for storage. There is an LED light in the bottom. The ornaments have



wood from Schacht as well as aspen. Mickey found two different LED lights on Amazon. The smaller one on the right goes nicely in hanging ornaments and come

30 for \$11.99. The other is submersible and 20 for \$29.00. The batteries are replaceable in both.

**Dave Hawley** made this hempwood urn with stippled maple and ebonized screw-on lid. It measures 5" dia x 4.5" high. He also made a yarn bowl of silver maple and turquoise that measures 8" dia x 4 3/8" high.



[www.BeadsofCourage.org](http://www.BeadsofCourage.org)

## BEADS OF COURAGE

The mission of Beads of Courage is to provide Arts-in-Medicine Programs for children coping with serious illness, their families and the clinicians who care for them.

**Rick Fleming** and **Ed Cypher** collect bowls for the organization. Bring your bowls to the next meeting or contact Rick or Ed about taking a contribution to them.

Rick: [turningadjet@yahoo.com](mailto:turningadjet@yahoo.com)

Ed: [cypher4691@msn.com](mailto:cypher4691@msn.com)



## IN MEMORIUM: BRUCE PERRY (1950 - 2021)

Bruce Perry was a dedicated and creative woodturner, a past VP and long-time member of FRW, an inspiring instructor, a font of diverse knowledge, and in Sandy's words, "a raconteur." He passed away December 17, 2021 at age 71 from COVID pneumonia combined with cardiac and respiratory factors.

Yes, Bruce was a storyteller, so we can presume an element of creative embellishment, but the truth is that he lived an interesting life. His family moved to Colorado when he was three weeks old, and he spent most of his life here, graduating from Aurora Central HS and Colorado Mountain College in Glenwood Springs. With a degree in photography and a lot of art classes under his belt, he served as a docent at the Smithsonian where he took a painting class from Salvador Dali. He had an eclectic resume that included managing photography and gun stores and a shooting range, construction work, and managing a large photo processing plant in Columbus, OH.

The story of Bruce's first involvement with woodworking is that he was given a child's tool kit and immediately tried to saw the legs off a grand piano, fortunately without success. His first serious foray into woodturning came in 1997 after he and Sandy met and decided to get married. Planning a backyard wedding, Bruce bought a lathe at a pawnshop to make legs for all the tables, and lanterns for the event. Not long after that he met Gene Wentworth at the Woodworking Show, and got involved with FRW. He studied with many prominent turners, including David Ellsworth, Stuart Mortimer, Alan Batty, Glenn Lucas, Richard Raffan, and Cindy Drozda. Bruce served as FRW Vice President/ Program Director (2011 & 2012), Mentoring Chair (2009 - 2011), and PHEOG Chair (2016), and was instrumental in codifying our bylaws.

Bruce Perry was an extremely intelligent human being. He was a member of Mensa International for 35 years, and his article, "Crafty at Woodturning" was published in the May 2020 issue of Matrix. Bruce was very generous with his knowledge: his

woodturning classes at Rockler and our sessions in his shop always involved stories, and tangents, and tangents to the tangents, but somehow he tied it all together. Sometimes I left shaking my head, but I know that I am richer having spent that time with him.

There was a love story, as well. Bruce and Sandy Perry would have celebrated their 25th anniversary next June, and woodturning was always a focal point. The FRW meetings were their "date night," Sandy always knitting, and they attended the annual symposium in Loveland and several AAW events together. Their home is filled with turned and carved items: Bruce's and many that they collected from other artists. Art and craft were essential elements in their relationship.

And of course, Bruce told stories with his art, be it woodturning, carving, or photography. As a turner he did all the requisite utilitarian projects, but his passion was in artistic expression. His FRW demo last September was a hollow form offset on a curved background, inspired in part by Georgia O'Keefe. He'd done a number of pieces in this series, which I found exquisite. His shop was littered with experiments and practice pieces that showed the development and evolution of his work. No one would ever accuse Bruce of having a tidy workspace, but the products of a fertile imagination were everywhere in evidence. Bruce was a passionate artist, a generous teacher, and an eclectic individual. His spirit, his work, and his stories will continue to inspire.

-Don Prorak

